



# H

# TOWNSHIP OF HAMPTON

Comprehensive Recreation, Park, and Open Space Plan

PASHEK  MTR

April 2023



# ACKNOWLEDGMENTS

## Township of Hampton Officials

Dr.Carolynn Johnson, Council President  
Bethany Blackburn, Council Vice President  
Dr. Joe Dougherty, Council Member  
Julie Fritsch, Council Member  
Richard Kernick, Council Member  
Jerry Speakman, Controller

## Comprehensive Recreation, Parks and Open Space Steering Committee

Joe Dougherty, Council Member  
Julie Fritsch, Council Member  
Laurie Christy, HCA Member  
Erika Chapman, HSC Vice President  
Dr. Rebecca Cunningham, HTSD Assistant Superintendent  
Camryn Federbar, Student Representative  
Merrit Des Lauriers, Citizen  
Chris Lochner, Township Manager  
Melanie Martino, Department of Community Services  
Paula Oliveiva, Student Representative  
Laurie Rizzo, Editor of the *Hampton Magazine* and *Hampton News*  
Liz Sasada, Citizen  
Lissa Geiger Shulman, Citizen  
Liz Spence, Environmental Advisory Council Member  
James M. Venture, PE, Planning Commission

## Township of Hampton Staff

Chris Lochner, Township Manager  
Kevin Flannery, Director of Department of Community Services  
Melanie Martino, Department of Community Services  
Bill Ryder, Program Supervisor

## Township of Hampton Library

Suzanna Krispli, Library Director

## Funding and Collaboration:

Work on this Comprehensive Recreation, Parks, and Open Space Plan was funded by the Township of Hampton. Pashek+MTR served as planning consultant.

---

# TABLE OF CONTENTS

- Introduction..... I
  
- Chapter 1: Community Background..... 1
  - Profile of the Township of Hampton, Allegheny County
  
- Chapter 2: Inventory & Analysis..... 12
  - Recreational Assets
  
- Chapter 3: Public Participation..... 34
  - Your Opinion Matters
  
- Chapter 4: Recommendations & Implementation Strategies ..... 43
  - Mission, Goals, Recommendations & Implementation

Appendices are provided as separate document.



# INTRODUCTION



# TOWNSHIP OF HAMPTON: A COMMUNITY OF PRIDE, PROGRESS AND TRADITION

## The Comprehensive Planning Process

*Where are we  
now?*



*Where do we want  
to be?*



*How do we get  
there?*

## Comprehensive Recreation, Parks, and Open Space Plan

In 2021, the Township of Hampton selected Pashek+MTR, a planning and design firm based in Pittsburgh, to complete the Township's Comprehensive Recreation, Parks, and Open Space Plan. Pashek+MTR had previously completed the Township of Hampton's 2021 Implementable Comprehensive Plan, which recommended the Township complete a Comprehensive Recreation, Parks, and Open Space Plan. The approach used to generate the Plan included a detailed inventory and professional assessment of existing recreational opportunities; a wide-ranging public input process; and the development of a vision for the future of recreation, parks, open space and greenways in the Township. Additionally, Pashek+MTR worked closely with the project Steering Committee who provided input and served as a sounding board for the developments of recommendations throughout the planning process. This Plan is designed to serve as a tool for addressing the current and future recreation needs of Hampton's residents and to establish a framework for the decisions that must be made in order to provide adequate recreation facilities and programs. This Plan is broad in scope, encompassing a variety of issues pertinent to parks, recreation and open space in the Township. It lays the groundwork for the continued successful planning and development of recreation, parks, trails, amenities, facilities, and programs.

This Plan is not law or a regulatory document, it is a guide, not a mandate, for future actions and decisions. It recommends an approach to maintain and provide a parks and recreation system that serves all the Township of Hampton residents throughout their lifetime with diverse and inclusive recreation opportunities. It suggests recommendations and strategies to maintain and provide residents with quality recreation opportunities. The Plan will serve as a reference for the Township officials, staff, and advisory boards; partner organizations; and other interested parties. Implementation of recommendations contained herein will require further discussion, public involvement, and approval for the actions to be undertaken.

## The Planning Process

The Planning Process was utilized by a three-step progression of questions that would allow this plan to be tailored to the Township of Hampton.

## Where Are We Now?

This question prompted us to research the existing Township recreation and parks opportunities. It is important to identify the types of recreational and natural resources already available to the community and the area of the Township which they serve. These facilities and resources could be Township owned and operated or they may be offerings and amenities provided by non-profits, school districts, private entities, and other government agencies. The management, finances, and operations of these recreation facilities should be researched and compared to State and National Statistics.

## Where Do We Want to Be?

This question drove the public engagement process to guide us in developing the vision for what the future of parks and recreation should be in the Township. Public input was gathered through a variety of sources including: a steering committee that was representative of local interest groups; two public meetings, key person interviews, a project website, and a digital and paper recreation questionnaire. In addition, Pashek+MTR completed a thorough analysis of existing conditions to determine needs for the future.

## How Do We Get There?

The culmination of the answers to the two previous questions established the direction the Township needs to take to meet the recreational needs, wants, and desires of its residents. It includes a vision statement that depicts what the future of recreation should be, goals for bringing the vision to fruition, and implementation strategies to accomplish the goals.

## Parks and Recreation – Good for You: Good for All

Parks and recreation is a critical component of community services for all Pennsylvania residents. Hampton School District, local sports and recreational organizations and non-profits have joined together to provide recreational opportunities throughout the Township. As one looks at parks, recreation, and open space across the country, the benefits are evident – senior citizens exercise to stay active and healthy; youth learn life skills by playing baseball, soccer or other youth sports; families strengthen relationships by hiking, biking or picnicking together; communities come together through special events.



This plan was developed in a world that had just experienced the Covid-19 pandemic. The pandemic led to an increased reliance and worth tied to parks and green space. Numerous studies exemplified physical and mental health benefits to spending time in green spaces. Now, we all must work together to ensure that these vital parks and open spaces remain open, accessible, welcoming, and inclusive to all people. As the

Pennsylvania Recreation and Parks Society says: Parks and Recreation are **good for you and good for all.**

Parks and recreation opportunities encourage citizens to be engaged in their communities as volunteers, stewards, advocates, and students. Access to parks and recreation facilities leads to healthy lifestyles for people of all ages. Activities in parks build self-esteem, reduce stress, and improve overall wellness. Parks enhance property values, contribute to healthy and productive work forces and help attract and retain businesses. Parks give communities a vital identity. Well maintained, accessible parks and recreation facilities are key elements of strong, safe, family-friendly communities.

## How to Use this Plan

The Plan provides a framework to fulfill the community's vision for the current and future of recreation, parks, open space, and greenways. It also provides the Township with a wealth of data and background information to support the enhancement of its recreation facilities, the preservation of natural features, connections to local assets, and the addition and development of new park land. The broad scope of this Plan includes:

- the documentation and analysis of a variety of issues pertinent to recreation, parks, open space and greenways in the Township
- clear direction for future recreation and green space initiatives
- realistic planning for implementation
- assistance in setting financial goals and the appropriate allocation of needed financial support
- a guide as the implementation strategies are completed, new strategies are developed, and documentation of existing conditions is needed
- strategies to guide parks and recreation in the Township of Hampton for the next 5-10 years, and
- information to support grant applications for the acquisition, improvement and expansion of recreation facilities, trails, and open space.

Current and future residents will be the ultimate beneficiaries of new recreation facilities and preserved resources based on the outcomes of the Plan. Residents have demonstrated an on-going interest in the growth of a high-quality recreation, parks, open space and greenways, and the preservation of natural resources.

# Pennsylvania Statewide Comprehensive Outdoor Recreation Plan: 2020-2024

Recreation for All - Pennsylvania Statewide Comprehensive Outdoor Recreation Plan 2020-2024 identifies the following priorities for action to protect these lands and waters, and investing in future recreation needs for all Pennsylvanians. The Township's priorities for parks and recreation were guided by these priorities.

## Health and Wellness

- Educate on the connection between health and outdoor recreation.
- Support programs that connect health and outdoor recreation.
- Equip health care providers with the tools needed to promote the health benefits of outdoor recreation.
- Create walking and biking networks that provide safe, close-to-home access to recreation and encourage healthy behavior in communities.



## Recreation for All

- Provide opportunities for everyone to regularly engage in outdoor recreation.
- Enhance recreational amenities to fit the needs and expectations of underserved people.
- Provide equitable access to outdoor recreation and conservation programs.
- Build a diverse workforce and volunteer base.



## Sustainable Systems

- Address infrastructure and maintenance needs in Pennsylvania's existing outdoor recreation areas.
- Protect and conserve lands and waters considering the impacts of climate change on outdoor recreation.
- Foster stewardship for Pennsylvania's recreation areas and natural, cultural, and historic resources.
- Design outdoor recreation areas to minimize impacts on the environment or conflicts among user groups.



## Funding and Economic Development

- Protect and expand public and private investments in outdoor recreation.
- Build strategic coalitions to maximize the economic impacts of outdoor recreation in Pennsylvania.
- Market Pennsylvania as an outdoor recreation destination.
- Demonstrate the benefits and impacts of nature-based solutions to addressing community needs.



## Technology

- Increase mobile connectivity in outdoor recreation.
- Develop best practices for emerging outdoor recreation technologies.
- Use technologies to support health goals and find places to recreate outdoors.
- Enrich the understanding of the natural, cultural, and historic aspects of the outdoors through technology.



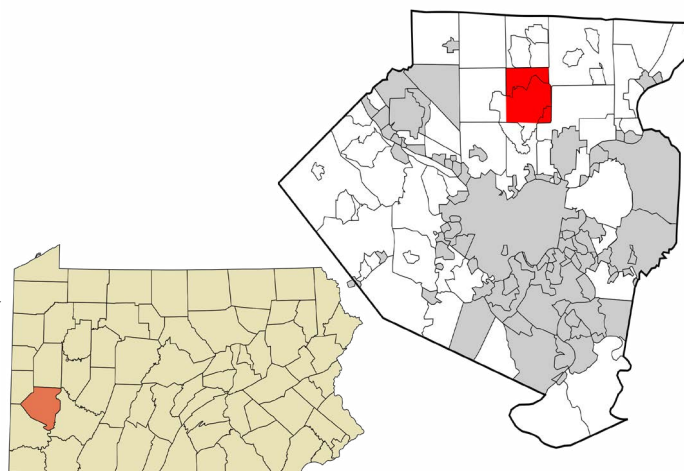
# CHAPTER 1: COMMUNITY BACKGROUND



## Profile of the Township of Hampton

The Township of Hampton, located in Allegheny County, is a community that values pride, progress, and tradition. The 16 square mile community of more than 18,000 residents is known for its high-quality school district and park. The Community Park is located adjacent to Hampton School District's Middle and High School Facilities. This proximity creates a valuable community hub. In addition to the Township's community park, the community is home to recreation assets including a community center and outdoor pool. The Rachel Carson Trail is also accessible from the community park.

The Rachel Carson Trail is a 45-mile (73 km) hiking trail entirely within Allegheny County, north of Pittsburgh, extending from the Harrison Hills County Park to North Park. The trail is intended to be used exclusively by hikers and runners. These uses are based on easement agreements with private land owners whose properties the trail passes through.



## The Vision for the Township of Hampton

The Township of Hampton Implementable Comprehensive Plan (2021) includes key issues and established the vision for Parks and Recreation in the Township of Hampton. The four Key Issues and a Vision for each one:

### Connectivity and Trails

The Township of Hampton enhances the quality of life of existing residents and attracts new residents by providing a connected network of routes that link people to important natural, civic, and commercial assets.

### Route 8 Appearance

The Route 8 corridor through the Township of Hampton is a thriving commercial corridor offering a mix of businesses and services that add both value and convenience for area residents and that, through their appearance, contribute to the Township of Hampton pride.

### Conservation of Natural Resources

The Township of Hampton conserves its natural resources for future generations while ensuring that residents today have access to natural areas with healthy ecosystems. This promotes community quality of life and supports community and individual health.

### Township-Community Relationships

The Township of Hampton interacts with residents, businesses, developers and other constituent groups in a timely, firm, fair, and friendly way.



## Past Planning Recreation Efforts

### Hampton Library Community Profile (2019)

The Allegheny County Library Association conducted surveys of the libraries within Allegheny County in 2019 called “Connecting Communities” with the object of helping libraries engage their communities more effectively. The profile of Hampton Library included demographic analysis of the Township of Hampton, results of the community-wide survey, and suggestions on how to address the key issues raised by members of the community. These key issues included:

- Sense of Community
- Breaking Down “The Bubble “ (encouraging diversity)
- Youth and Families
- Strong Governance and Management
- Supporting Older Adults
- Growth and Economic Development
- Health and Human Services

Additionally, 50% of respondents to the survey indicated that the library is a community asset. The top barriers to library use included time, library/program hours, and online access.



### Hampton Park Master Plan Report (2014)

The 2014 Hampton Park Master Plan was developed following the recommendation of the 2014 Township of Hampton Comprehensive Plan Update. The Master Plan recommendations which have been implemented include:

- Inclusion of ADA parking and accessibility to multiple facilities including the tennis courts and playground - *some areas are complete*
- Expansion of internal trail network - *Phase 1 has been completed and Phase 2 is in progress*
- Replacement of wooden play equipment with accessible central playground equipment - *complete*
- Formalized drainage and rain garden - *complete*



### 2021 Township of Hampton Implementable Comprehensive Plan

The Connectivity and Trails chapter as well as the Conservation of Natural Resources chapter contained recommendations regarding Hampton’s recreation assets. They included:

- Implement a network of walking and biking routes in the Township by funding and building one of the suggested pilot trail segments.
- Develop practical tools related to an active transportation network development including seeking funding sources and partners to implement projects.

- Create design standards and implement a signage and amenities plan in support of trail use across the Township.
- Periodically update ordinances to ensure that the Township remains proactive with regulations that protect the community’s trees, water, air and greenspace.

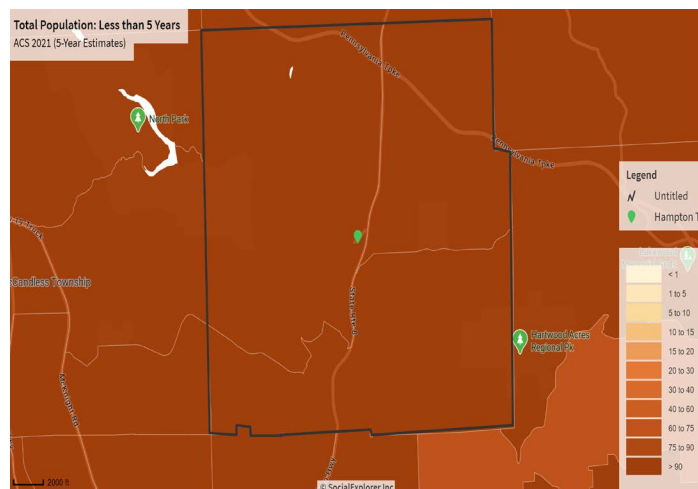
## Demographic, Social, and Economic Analysis

As part of the Comprehensive Recreation, Parks, and Open Space Plan, the profile of the community was reviewed to identify trends in age demographics, households and how Hampton compares with state and county averages.

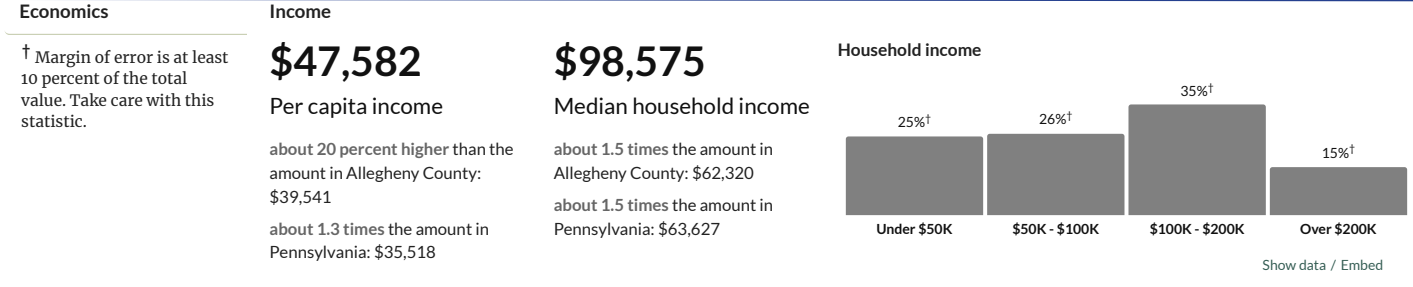
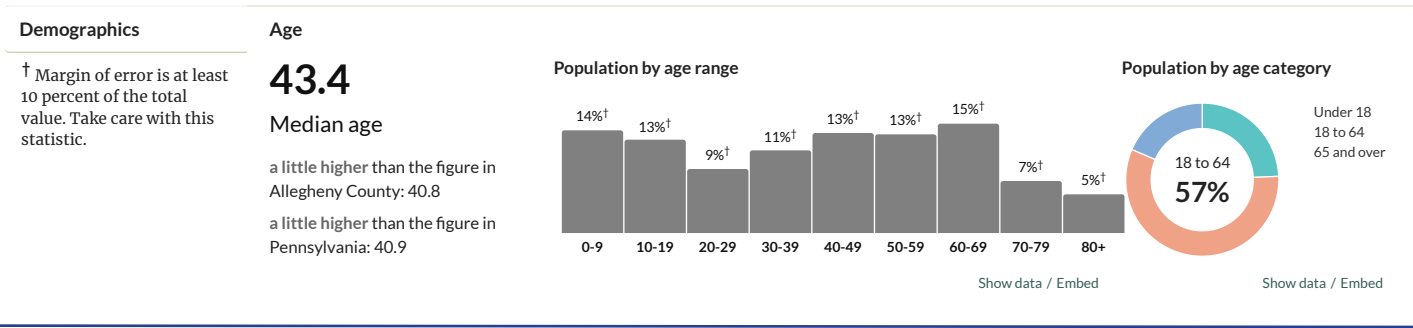
### Demographic Analysis

As of the 2020 Census, Allegheny County has a population of 1,250,578 people, a 2.2% increase since the 2010 Census. It is the second most populated County in the Commonwealth of Pennsylvania. The Township of Hampton has a population of 18,470, a 0.6% increase since 2010. While the Township is located in the “North Hills” of the Pittsburgh region which is the fastest growing area in Allegheny County, Hampton did not see the same growth of neighboring communities. (McCandless 4.4%, Pine 28%, Richland 7.6%, Shaler 2.2%). Approximately 18.5% of the population is over the age of 65, an increase of 22.5% since 2010 while 24.3% are under the age of 19, a decrease of 5% since 2010. Compared to other communities in Allegheny County, the Township has an older population.

Below are several graphs showing the median age, income level, households, poverty level, housing values and educational attainment of Hampton based upon the 2020 Census.



Township of Hampton: Median Age Distribution per Square Mile (Social Explorer)



**Families**

**Households**

**6,881**  
Number of households

Allegheny County: 545,695  
Pennsylvania: 5,106,601

**2.6**  
Persons per household

about 25 percent higher than the figure in Allegheny County: 2.2  
about 10 percent higher than the figure in Pennsylvania: 2.4

**Population by household type**

Married couples  
Male householder  
Female householder  
Non-family

Show data / Embed

† Margin of error is at least 10 percent of the total value. Take care with this statistic.

**Poverty**

**3.4%**  
Persons below poverty line

about one-third of the rate in Allegheny County: 11.3%  
about one-quarter of the rate in Pennsylvania: 12%

**Children (Under 18)**

Poverty  
Non-poverty

Show data / Embed

**Seniors (65 and over)**

Poverty  
Non-poverty

Show data / Embed

† Margin of error is at least 10 percent of the total value. Take care with this statistic.

**\$274,300**  
Median value of owner-occupied housing units

more than 1.5 times the amount in Allegheny County: \$161,600  
about 1.5 times the amount in Pennsylvania: \$187,500

**Value of owner-occupied housing units**

Value Range	Percentage
Under \$100K	2%†
\$100K - \$200K	27%†
\$200K - \$300K	29%†
\$300K - \$400K	23%†
\$400K - \$500K	7%†
\$500K - \$1M	11%†
Over \$1M	1%†

Show data / Embed

**Social**

† Margin of error is at least 10 percent of the total value. Take care with this statistic.

**Educational attainment**

**98.3%**  
High school grad or higher

a little higher than the rate in Allegheny County: 94.8%  
about 10 percent higher than the rate in Pennsylvania: 91%

**55.9%**  
Bachelor's degree or higher

about 1.3 times the rate in Allegheny County: 42.5%  
more than 1.5 times the rate in Pennsylvania: 32.3%

**Population by highest level of education**

Education Level	Percentage
No degree	2%†
High school	19%†
Some college	24%†
Bachelor's	33%†
Post-grad	22%†

\* Universe: Population 25 years and over  
Show data / Embed

What does this mean? Data shows that 93% of households in Hampton have a broadband subscription, which is an opening to reach those households on the Township's website or Facebook page with various recreational opportunities. With the increase in senior residents, there will be more demand for programming and facilities for that demographic. Additional recreation facilities geared towards families with young children may encourage this demographic to move to and stay in the Township.

## Transportation

The Township of Hampton has two major routes connecting it to neighboring communities and the City of Pittsburgh. Route 8 is a heavily trafficked route, averaging 9,000 to 11,000 vehicles daily. PennDOT owns this thriving commercial corridor. Interstate 76 runs from Ohio to New Jersey and is part of the Pennsylvania Turnpike

highway system. The PA Turnpike was one of Pennsylvania’s first toll roads and highways. It is reportedly America’s first superhighway. Interstate 76 travels through the Northern portion of the Township of Hampton. The proximity to these routes makes travel easy to the Township and gives easy access from many different areas.

## Schools

### Township of Hampton School District

The Township of Hampton School District consists of three elementary schools, one middle school, one high school, an online academy, and the A.W. Beattie Career Center. The Township hosts, or has athletic organizations that provide large athletic programs with numerous sports during the fall, winter and spring seasons including crew, cross country, football, volleyball, tennis, softball and baseball, cheer, diving, gymnastics, ultimate Frisbee, basketball, track, lacrosse, tennis, golf, and soccer.

The Hampton School District sports program has a strong emphasis on participation in sports. It has won the WPIAL Sportsmanship Award three years running (2019-2020, 2020-2021, 2021-2022). Other recent championships include the Boys Cross Country (2021, 2022), Boys Soccer (2021), Boys Swimming and Diving (2021, 2022), and Girls Lacrosse (2017, 2018).

### A.W. Beattie Career Center

Located in Allison Park, the A.W. Beattie Career Center is an extension of nine school districts located in northern Allegheny County. These school districts include Avonworth, Deer Lakes, Fox Chapel Area, Township of Hampton, Northgate, North Allegheny, North Hills, Pine-Richland, and Shaler Area.

The center offers 20 programs to prepare students for technical careers after high school. The center’s programming provides students skills in careers such as construction, culinary arts, cosmetology, nursing, robotics engineering technology, veterinary sciences, and business.

## Community Parks, Recreational Facilities, and Natural Features

The Township of Hampton has a thriving Parks and Recreation Department which is division of the Department of Community Services. The Township is the home of the 195-acre Community Park with amenities and programs for all ages.

### Hampton Community Park

- Community Park includes seven pavilions, nature trails, soccer and baseball fields, restrooms, a Gaga ball pit, playgrounds, a pond, a horseshoe pit, and the Veterans Memorial Court in honor of Hampton’s war veterans.
- Community Center houses the Hampton Community Library as well as a Fitness Center, two full court basketball courts, a cafe, multiple gathering areas, and facility rentals.

- Community Outdoor Pool Complex includes amenities such as a heated in ground pool, a spray feature, four adult lap lanes, slides, and diving boards. The complex also includes pavilions, seating areas, a concession area, bathrooms, and bath house facilities.

## Natural Points of Interest

- Rachel Carson Trail – the Township of Hampton contains a portion of the Rachel Carson Trail, a 45-mile hiking trail within Allegheny County. The Rachel Carson Trail begins in Harrison Hills County Park and continues through North Park in Allegheny County.
- Hartwood Acres Park – a 629-acre park located both in Hampton and Indiana Township and is part of the Allegheny County Park system. The park contains amenities such as mansion tours, an amphitheater, an off-leash dog area, cross-country skiing, walking, hiking, and bridle trails.
- North Park – a 3,094-acre park located in Hampton, McCandless, and Pine Townships and is a part of the Allegheny County park system. The park contains amenities such as a 65-acre lake, golf course, pool, ice rink, ballfields, nature center, pavilions, off-leash areas, dek-hockey rink, and trails.
- McCaskin Run – a stream that runs through Allegheny County. The stream is mainly used for fishing.
- Pine Creek Watershed – a watershed that flows into the Allegheny River adjacent to the city of Pittsburgh. It is 67.3 square miles that drain 14 municipalities. The Pine Creek Watershed Coalition participation includes members of environmental organization, sportsmen’s groups, and business interests, as well as elected officials, municipal staff and volunteers. An Assessment Report is available based on the finding and recommendations resulting from the work of the volunteers who conducted the Stream Visual Assessment in 2005.
- Crouse Run Nature Reserve – a 22-acre natural area with features including walking trails, a stream, and areas for bird watching. It was a site of Rachel Carson’s early studies. The Pine Creek Land Conservation Trust (PCLCT) now assures its preservation.
- Irma Kost Natural Area - this beautiful area on the east side of Hampton Community Park is a hidden jewel dedicated to Mrs. Kost for her 30 years of dedicated hard work to develop and maintain this area. It is maintained by volunteers and is home to a variety of birds, wildflowers, wildlife and trails.

## The Department of Community Services

The Township of Hampton’s Department of Community Services provides a variety of recreation programming for all ages and oversees special events throughout the calendar year.

Youth programs include dancing, swim lessons, summer camps, tennis, basketball, little veterinary dog school, and little doctor school.

Adult and senior programs include pickleball, badminton, exercise classes such as yoga, aqua aerobics, line dancing and tai-chi.

Special events include Christmas in July, Community Day Celebration, Halloween events and parade, holiday events, an Easter Egg Hunt, and a Farmer's Market.

## Hampton Community Library

The Hampton Community Library (HCL) is the success story of a number of Hampton residents who worked hard to bring a library to the community. Open to the public in September 1990, it is supported by volunteers, as well as by generous individual contributors and businesses. HCL is a full-service ACLA public library, free of charge. HCL is a participant in the Electronic Information Network for Public Libraries in Allegheny County. It is a valuable asset to the Community Center.

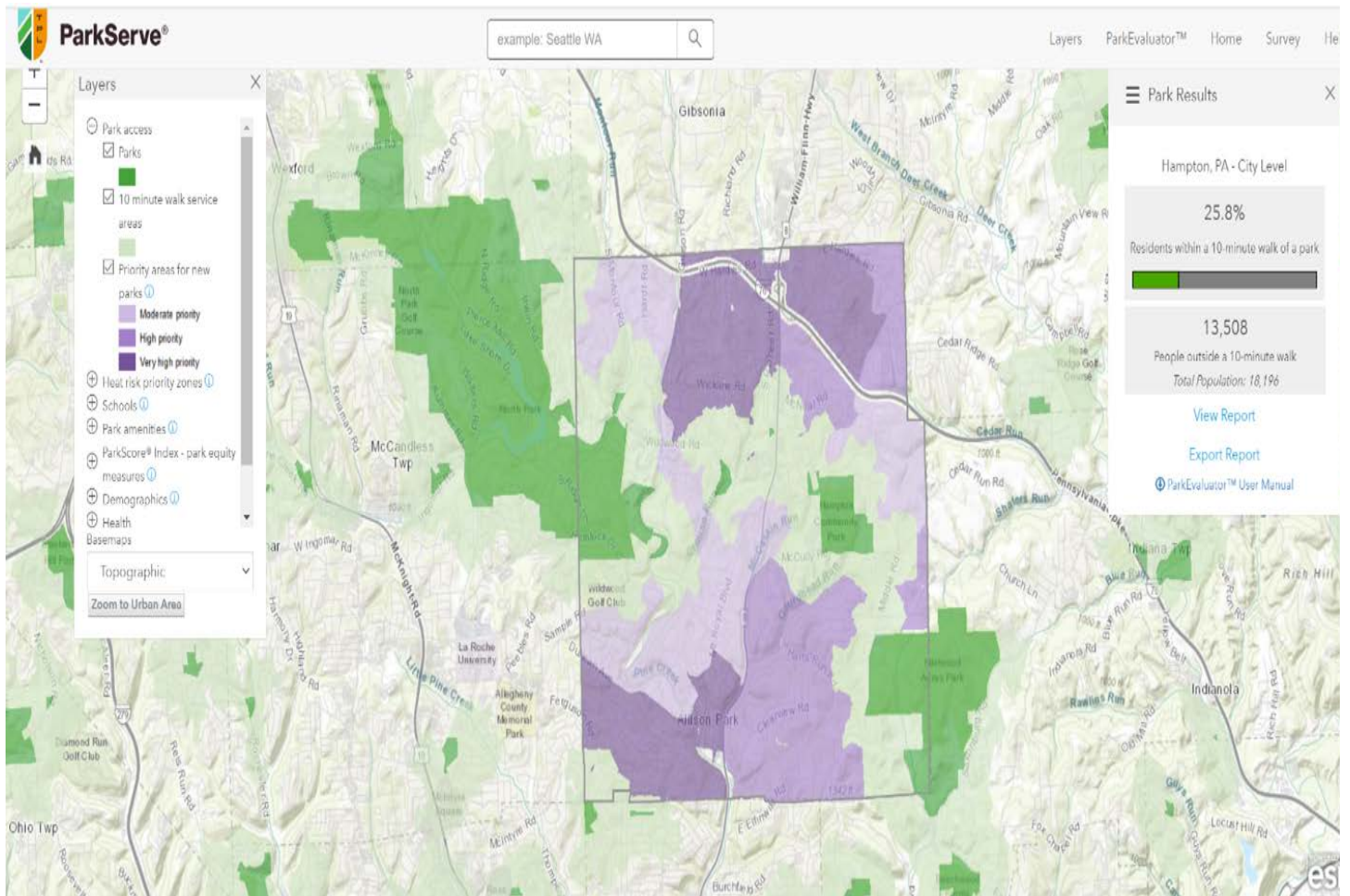
The Library offers more than 28,000 volumes of resources, a wide variety of youth and adult programming including summer reading programs, inclusive programs, cookbook and food discussions, card club, computer access, media kits.

The Friends of the Hampton Community Library supports and promotes the library through special events and fundraising programs.

## Trust for Public Land “10-Minute Walk Analysis”

The following images and data to the side are from the Trust for Public Land's “10-minute Walk” research which analyzes how many residents can access parks by a 10-minute walk from their house. The percentage of residents that live within a park is 26% which is below the median of 55% (includes 14,000 ParkServe cities). This is partly due to the suburban nature of the Township and lack of pedestrian and bicycle infrastructure.

Additionally, the map below analyzes and indicates areas within the Township that would benefit from additional park land. Population density shows the central Northern part of Hampton as well as the Southwest portion of the Township of Hampton have a need for new or additional parks or green space. An analysis of on- and off-road connections was developed as part of Hampton's 2021 Implementable Comprehensive Plan. It has been revisited during this planning process.



**26%** of residents live within a 10 minute walk of a park.

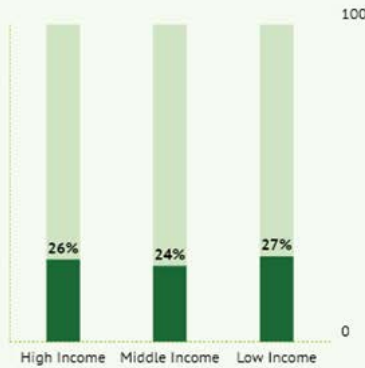


Median for the 100 ParkScore® cities: 75%  
 Median for the 14,000 cities and towns in our ParkServe® database: 55%

Percent of residents within a 10-minute walk of a park by age



Percent of residents within a 10-minute walk of a park by income

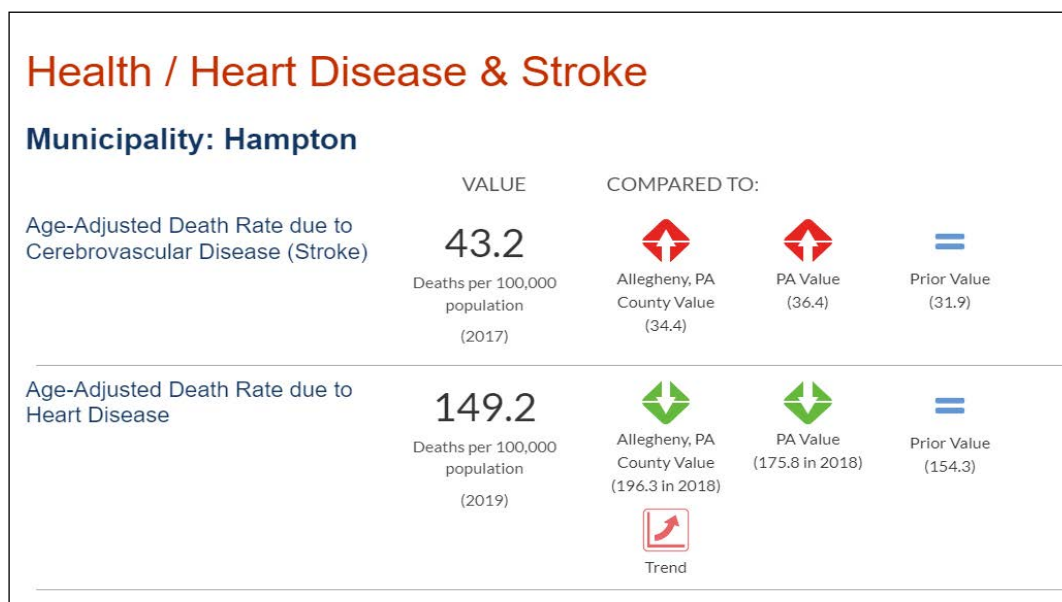
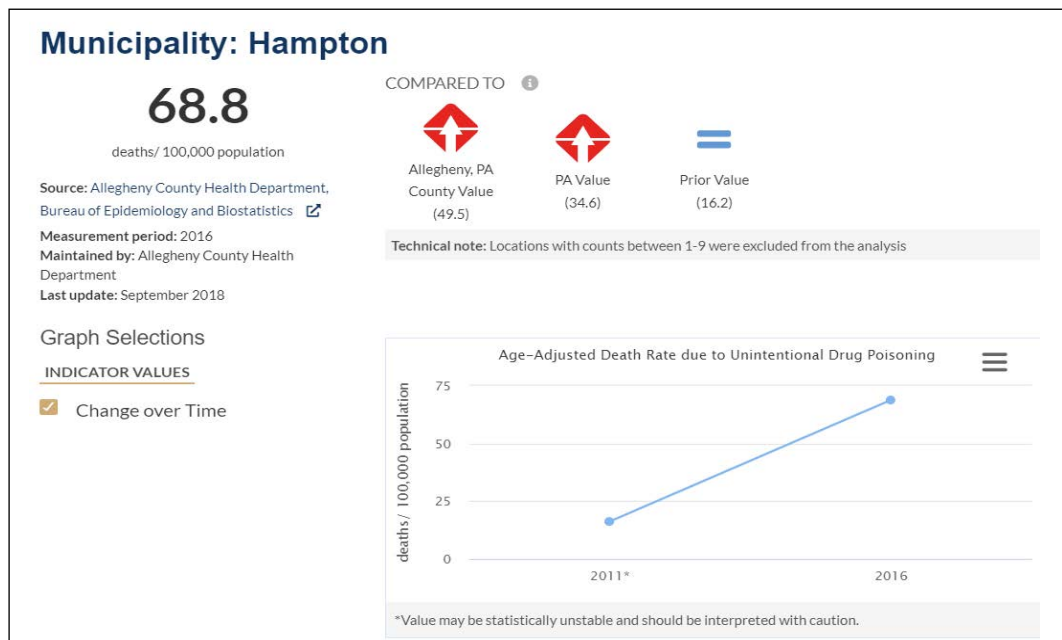


# The Importance of Parks and Recreation in the Township of Hampton and Beyond

The recent covid pandemic, racial justice and LBGQTQIA+ movements, growing economic pressures, health crises, and impact of climate change all impact our parks and recreation offerings. The pandemic has made us realize *Parks are Essential*.

There are unique opportunities for parks and recreation to advance social justice, ensure equity, strengthen environmental resiliency, and improve health and well-being, preventing future health, social, environmental and economic challenges.

Community health indicators show that the Township of Hampton has a higher than average rates of drug overdoses and heart disease and stroke. Providing opportunities for residents to recreate can assist in reducing these issues.



The Pennsylvania Department of Conservation and Natural Resources **Climate Change Adaptation and Mitigation Plan** identifies the following climate change vulnerabilities:

1. Changing Forest Composition
2. Decline of Rare, Threatened and Endangered Species
3. Increase in Forest Pest Outbreaks
4. Increase in Invasive Species
5. Increased Habitat Fragmentation
6. Increased Geologic Hazards
7. Fluctuating Lake Levels
8. Extended Recreation Season
9. Reduced Winter Recreation Season
10. Increased Flood Risks
11. Warmer Water Temperatures - Reduction in Cold Water Species Habitat
12. Natural Disasters and Public Safety
13. Energy Demand and Infrastructure
14. Most Serious Threats are Yet to Come
15. Increase in Atmospheric Carbon
16. Public Safety and Health Risks - Ticks, Mosquito-Borne Diseases, Severe Storms, Heat Related Illnesses, Poor Air Quality
17. Possible Policy Conflicts
18. Public Education and Understanding
19. Increased Challenges - Requires Additional Staffing to Address

The Township of Hampton has many natural resources. It is one of the pivotal reasons people move to the Township: forests, meadows, and abounding nature. The Township values the recreational opportunities its natural landscape allows. Many of the climate change vulnerabilities listed above will greatly effect these opportunities. The Township should consider making the PA DCNR’s Plan a part of their Parks and Recreation plans.

## Synopsis

Parks and Recreation is vital to the health and wellness of our communities including the residents, visitors and natural resources. The Township of Hampton has embraced the importance of these assets and continues to improve upon the exiting assets and programs to create a safe, sustainable, fun, and healthy environment. This background analysis and assessment was conducted to establish a base line of existing conditions and guide the development of recommendations and implementable strategies. This plan will serve as a guide for decision makers and staff for the next 10 years.

# CHAPTER 2: INVENTORY & ANALYSIS





# Agency Mission Statement, Goals and Objectives

In 2014, the Township of Hampton developed a Master Plan for their Community Park. This Master Plan was revisited during the 2021 Implementable Comprehensive Plan and updated to reflect input during public engagement efforts.

The goals outlined in the 2014 Plan stated:

It is the goal of the Township of Hampton to provide an opportunity for residents to participate in a variety of activities and programs which:

1. Will provide and encourage community involvement, exercise, learning, enjoyment, and enrichment.
2. Are available to and will appeal to a broad range of interested participants regardless of age or ability.
3. Accommodate various levels of interest and commitment within the realm of recreation.
4. Build self-esteem, enable and support personal growth and pride, while also teaching and rewarding active contributions to community and group or team.
5. Ensure safe, fair, equitable and ethical conditions.
6. Foster the development of programs which lend themselves to instruction, sportsmanship, fair play, positive social interaction, self-worth and a respect for others.
7. Support and complement the school/community programs without duplicating them.

These goals guided the Committee through this planning process.



## Agency Administration and Personnel

The Department of Community Services administration includes the Public Works Department and the Parks and Recreation Department. It is the largest of the Township's service departments. The Department's operations include the maintenance of streets, bridges, and Township buildings, storm water control, snow/ice control, equipment and fleet, programming, special events, facility use, park maintenance, scheduling, working with community groups, budgeting, purchasing annual and seasonal programs, outdoor pool operations, after school and summer camps, special events, and operation of the Community Center. The department includes 21 full-time professional staff, as many as 100 seasonal staff, and contracted services staff including program instructors. The Department is managed by a full-time Director who reports to the Municipal Manager. This planning project was guided by the Marketing and Events Coordinator Melanie Martino with additional support provided by Bill Ryder, Program Manager.

## Environmental Advisory Council

The Township's Environmental Advisory Council (EAC) consists of seven (7) residents appointed by the Township Council, and is responsible for reviewing land development applications to ensure compliance with environmental protection regulations. In addition, issues relative to the protection, conservation, management, promotion and use of natural resources, including air, land and water resources are also within their review. The EAC currently meets on the first Monday of each month.

## Hampton Community Association

Created as a 501-C3 not-for-profit organization, the Hampton Community Association Board is comprised of seven (7) members. The principle purpose of the Association is to serve as a conduit for those who wish to make a charitable donation towards a Township sponsored program or facility. It raises funds through a variety of events and activities including a Golf Outing Fundraiser. (<https://hampton-pa.org/DocumentCenter/View/1700/Community-Park-Loop-Trail-donation-form>) The Association Board meets the third Tuesday of the month and welcomes input for specific Association-sponsored programs.

# Facility and Open Space Inventory and Analysis

The Steering Committee, staff, and consultant compared the inventory of Community Park and its existing park facilities with the National Recreation Park Association, Agency Performance Review, and Park Facility national standards. As illustrated in the spreadsheet on the following page, the Township of Hampton (current population 18,479), exceeds the national recommended number of facilities per X people in most categories. Hampton's Community Park consists of 195 acres which equates to 18 acres per 1,000 residents, exceeding the national recommendation of 10 acres per 1,000 residents. It is also worth noting that the Township is home to North Park and Hartwood Acres, which are both part of the Allegheny County Park System.

North Park encompasses 3,094 acres in Hampton, McCandless and Pine Township. The park features a 65-acre lake with fishing and kayaking, a golf course, pool, ice rink, ballfields, nature center, shelters, off-leash dog park, dek hockey rink and hiking, walking and bridle trails.

Hartwood Acres Park features 629 acres in Hampton and Indiana Townships. Free concerts, mansion tours, teas, off leash dog park, cross country skiing, walking, hiking, and bridle trails are highlighted within this beautiful landscape.

2021 NRPA Agency Performance Review - Park Facilities			
Park Facility	1 Facility per X People (Less than 10 Municipal Parks)	Existing	Recommended
Playgrounds	4,906	7	4
Basketball Courts	7,000	7	3
Tennis Courts (outdoors)	3,978	6	4
Diamond Fields: Youth	5,425	10	3
Rectangular Fields: Multi-use	6,000	3	3
Swimming Pools (outdoor)	10,500	1	1
Skate Park	19,500	0	0
Multi-purpose Synthetic Field	8,663	0	2
Community Center		1	
<b>10 Acres/1,000 Residents = 130 Acres</b>			
Community Park - 195 acres			
Seven Shelters			
Pond			

## Facilities and Maintenance Equipment



### Community Facilities

The Township of Hampton has a wealth of indoor and outdoor facilities as shown on the previous NRPA Analysis Chart. The Township continues to allocate funding for annual capital improvements. During the Fall of 2022, a new gymnasium floor and walking track were installed at the Community Center.

### Community Center

In 2004 the Township refinanced existing debt, phased out the Township Sanitary Authority, and issued bonds that would cover the cost to build the Community Center. It is located in the Community Park and houses

the Hampton Community Library which is independently operated.

There are many opportunities for gathering, exercising, and learning in the Community Center. The Center includes activity rooms, an adult lounge, aerobics/dance room, concession area, fireplace/gathering area, fitness center, great rooms, heat and serve kitchen, indoor track, library, and youth lounge.



## Rentals

There are various rental opportunities in the Community Center. Rental facilities can be made as early as two years in advance for residents and 18 months in advance for non-residents. These areas include:

- Great room areas A or B (varies from 1,875 sq ft)
- Activity 1 (625 sq ft)
- Activity 2 (1,050 sq ft)
- Gymnasium (12,100 sq ft)
- Adult lounge (capacity: 30)
- Informal gathering area (capacity: 35)

Community Park is home to seven outdoor pavilions that can be rented one year in advance. Each pavilion contains six picnic tables, water pump, lights, a charcoal grill, and electrical outlets. Currently only two are handicap accessible: Rotary Pavilion and Alcoa Pavilion. During the public engagement portion of this Plan a desire to develop a three or four season pavilion was shared.

The Block Party Trailer is available at no charge to Township residents for residential block parties on Fridays, Saturdays, and Sundays. The trailer comes with a portable volleyball net, stand and ball, 2 sets of cornhole boards, a basketball, football, 2 tables, 26 chairs, 12 cones, 2 garbage cans and other amenities.

The Facility Rental Packet is available on-line at the [Parks and Recreation](#) page.

## Community Pool

The Hampton Community Outdoor Pool Complex includes a heated in ground pool which includes a zero-foot walk - in area and spray feature, four adult lap lanes, two small slides, one large slide, two diving boards, concession stand, and two rental pavilions. It is open from Memorial Day to Labor Day from 11:00 a.m.-7:00 p.m., daily unless otherwise noted.



The Township offers a variety of memberships including resident, non-resident, and daily admissions. Staff also offers a comprehensive swim lesson program including Introduction to Swim, Beginner Skills, Advanced Strokes, and Stroke Proficiency.

The Hampton High School is home of a six-lane, 25-yard indoor pool. The School District Swim Team, the Dolphins, trains at the Hampton High School pool during the short course season (September-May).

During the summer, after the conclusion of the school year, the team trains at the Community Pool. The Township offers this space in the early mornings on weekdays.

The Community Pool is a regional asset that serves residents from surrounding communities. Recent upgrades to the pool have included new restroom facilities. Since the pandemic, the Township (and the region) have found it difficult to employ lifeguards and pool staff. Efforts were made last year to increase wages to assure the ability to remain open on a consistent basis. Staff should review projected 2023 wages and recommend membership/daily fee increases in order to break even or at least remain relatively sustainable. The 2022 Fall Schedule for indoor swim times are Mondays and Wednesdays from 8:15 p.m.-9:15 p.m. Fee is \$4.00 per persons ages 3 & up.

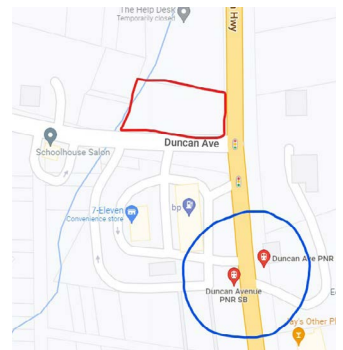
The Township partners with the School District to offer indoor swimming opportunities. The Township should continue to work in conjunction with the School District to offer additional indoor swimming, especially during the off season.

## Sports Facilities

The Township of Hampton shares resources with the Hampton School District Athletic Department and Athletic Associations. Community Park has been built out regarding active recreation opportunities. The organizations which use the existing facilities should develop an action plan to identify additional land for desired facilities such as synthetic and natural turf fields, indoor facilities, and other future needs.

A parcel near Route 8 & Duncan Avenue has been discussed as a possible multi-purpose field, however, there has been no commitment from sports organizations or the Township. A second parcel was also identified which is currently owned by St Ursula Roman Catholic Church.

The analysis of community facilities indicates the future need for multi-use fields as youth Lacrosse and Soccer continue to expand. Community Park's potential expansion to address this need includes the area now referred to as the Auxiliary/ Meadow Field. The construction of synthetic turf fields could help ease the Spring wet season. Additional areas for multi-sports practice areas such as Central Elementary, Poff Elementary and Wyland Elementary were reviewed. The following maps shows possible areas for practice fields for both Lacrosse and Soccer.



Potential future recreational areas include a Township owned parcel near Route 8 and Duncan (also shown in relation to the local Park & Ride) and a parcel currently owned by St. Ursula's.

# HAMPTON COMMUNITY PARK

Proposed Multi-Use Turf Field Location



# CENTRAL ELEMENTARY SCHOOL

Proposed Multi-Use Turf Field Location



### POFF ELEMENTARY SCHOOL Proposed Multi-Use Turf Field Location



### WYLAND ELEMENTARY SCHOOL Proposed Multi-Use Turf Field Location



Sports Facilities		Owned by the Hampton Township School District			
Asset	Measurements	Condition	Lights	Accessible	Notes
High School Baseball Field	Rt-315' Ct-370' Lt-315'	Good	No	Yes	
High School Soccer Field	(270' x 140')	Good	No	No	
High School Football Field	(365' x 160')	Good/Turf	Yes	Yes	
High School Swimming Pool	6 lanes, 25-yards	Good	Yes	No	
Central Elementary, Baseball	Rt-170' Ct-170' Lt-170'	Good	No	No	
Central Elementary, Playground		Good	No	Yes	
Wyland Elementary, Baseball/Multi	(250' x 110')+	Fair	No	No	
Wyland Elementary, Playground		Good	No	Yes	
Poff Elementary Baseball/Multi	(350' x 200')+	Fair	No	No	
Poff Elementary, Playground		Good	No	Yes	
Poff Elementary, Basketball		Good	No	Yes	

## Equipment

The Department of Community Services performs routine maintenance on Township vehicles and equipment. Routine maintenance is defined as lubrication, oil system changes, washing, tire replacement/rotation, refueling, and various repairs to vehicles and equipment systems with the capacity of the department.

Major Township vehicles and equipment used internally by the department include:

- 3 Administrative Vehicles
- 2 Pickup Trucks
- 5 5-Ton Dump Trucks
- 1 1-Ton Dump Truck
- 1 Ford Escape
- 5 Ford Explorers
- 1 Camera Truck
- 1 Ford Utility Truck
- 10 Portable Generators
- 1 Troy Build Rototiller
- 1 Diesel Air Compressor
- 1 CAT Backhoe
- 1 Snow Blower
- 2 Rubber-Tire Front Loaders
- Salt Spreaders
- 1 Brush Clipper
- 1 3-Ton Roller
- 1 International Tractor
- 1 Vibration Compaction Unit
- 1 Vactor Truck
- 3 Utility Trailers
- 1 Paving Equipment Trailer
- 1 Boom Mower
- Salt Brine System

## Hampton Township Existing Facilities

**Community Park, 195 acres** *Owned by the Township of Hampton*

Asset	Measurements	Condition	Lights	Accessible	Notes
Baseball/Softball Field #1	Rt- 280' Ct-350' Lt-280'	Good	Yes	Yes	
Baseball Field #2	Rt-200' Ct-220' Lt-220'	Good	Yes	Yes	
Baseball Field #3	Rt- 210' Ct-210' Lt-210'	Good	Yes	Yes	
Basketball Courts (2)	85' x 50'	Good	Yes	Yes	
Meadow Field- Baseball/Softball	Rt-80' Ct-110' Lt-80'	Fair	No	No	
Meadow Field	(150' x 240')	Fair	No	No	
Soccer Fields					
	9 (90' x 60')	Good	No	No	
	2 (200' x 120')	Good	No	No	
	1 (230' x 150')	Good	No	No	
North 40 Soccer Field	(135'x 350')	Fair	No	No	
Dek/Street Hockey	(125' x 75')	Good	Yes	Yes	
Sand Volleyball Court	(50' x 30')	Good	Yes	Yes	
Tennis Courts (6)	(80' x 35')	Good	No	Yes	
Outdoor Community Pool	Lanes, Splash Area, Zero Entry, Slide	Good	Yes	Yes	
Pacific Pavilion (Pool)		Good	Yes	No	
Atlantic Pavilion (Pool)		Good	Yes	Yes	
Playgrounds					
Sports Court		Fair	No	No	
Central		Good	No	Yes (Not Swings)	
Meadow Field		Fair	No	Yes	
Gaga Pit		Fair	No	No	
Horseshoe Pits		Fair	No	No	
Pavilions					
Alcoa	(40' x 25')	Good	Yes	Yes	6 tables, water, electric, grill
Drake	(40' x 25')	Good	Yes	No	6 tables, water, electric, grill
Hardt	(40' x 25')	Good	Yes	No	6 tables, water, electric, grill
Grubbs	(40' x 25')	Good	Yes	No	6 tables, water, electric, grill
Kraus	(40' x 25')	Good	Yes	No	6 tables, water, electric, grill
Orchard/Ling	(40' x 25') (15' x 15')	Good	Yes	No	6 tables, water, electric, grill
Rotary	(40' x 25')	Good	Yes	Yes	6 tables, water, electric, grill
Restrooms (3)		Good/Fair	Yes	No	
Meadow Restroom		Good	Yes	Yes	

# Recreation Programs and Services

The Parks and Recreation Department provides the community with vast opportunities to create memories, have fun, and continue to remain healthy both physically and mentally. Their programs continue to grow and develop and include:

- **Community Events** such as Community Days, Farmers Markets, Recycle Rama, Dog Swim Day, and Concerts
- **Holiday Events** such as the Easter Egg Hunt, Pumpkin Carving Contest, Christmas in July, Dog Costume Contest, and Neighborhood Santa Tour
- **Exercise and Fitness Programs** such as Yoga, Open Gym Hours, Walking Track, Pickleball, Tennis, Basketball, Badminton, Dance, Volleyball, Swimming Lessons
- **Youth and Adult Programs** such as Summer Play Camp, Little Medical School, and many offerings through the [Hampton Community Library](#)

# Greenways

The Township of Hampton is fortunate to have substantial areas of parkland and preserved green space, including Hampton Community Park, Allegheny County’s North Park and Hartwood Acres, and the Crouse Run and Irma Kost natural areas. In addition, the Township’s land area contains portions of the regional Rachel Carson Trail and parts of the Pine Creek and Deer Creek Watersheds.

Citizen volunteers participate in the community’s Environmental Advisory Council, and Hampton operates a Municipal Separate Storm Sewer System to help prevent pollution in its streams. The community boasts wooded hillsides and a mature tree canopy. The Allegheny County Natural Heritage Inventory lists several locations of note: Crouse Run Valley Biodiversity Area (BDA) (Exceptional Significance), Hemlock Grove BDA (High Significance), Willow Run Slopes BDA (High Significance), and the Cold Valley geologic features/fossil site.

Though the community is largely “built out,” meaning that nearly all available and developable land has been developed, it retains important natural assets.

Those who participated in the public input phase of this Plan as well as the 2021 Implementable Comprehensive Plan, voiced a strong commitment to the natural landscape and ecological systems that knit the community together which includes the streams, valleys, wetlands, steep slopes, tree canopy, air quality and native species of plants and animals.

Residents expressed understanding of the value of these resources to the community’s quality of life and resilience, and to individual and community health. They also acknowledged their role and responsibility in conserving these natural assets for future generations, while expressing concern that the many pressures on these systems will cause irreparable harm.

Citizens also said they hope the Township would maintain a leadership role in conserving natural resources as means of improving quality of life, community health, and community resilience. They also said they hope that the Township will take additional steps to educate and engage residents and businesses to help meet goals. Any conservation efforts must recognize the challenges presented by the fact that many natural resources lie on private property, not Township-owned land.

## Looking Ahead

Efforts to improve conservation of natural resources and resilience can best be addressed through establishing baseline information about the existing conditions described above and tracking/quantifying progress (such as trees removed and trees planted).

Efforts to protect natural resources should:

- Improve quality of life and community and individual health of Hampton residents and people throughout the region through access to healthy air, streams and green spaces.

## Greenways Vision

The Township of Hampton conserves its natural resources for future generations while ensuring that residents today have access to natural areas with healthy ecosystems. This promotes community quality of life and supports community and individual health.

# Hampton Township

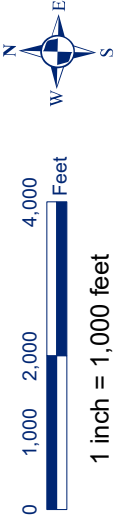
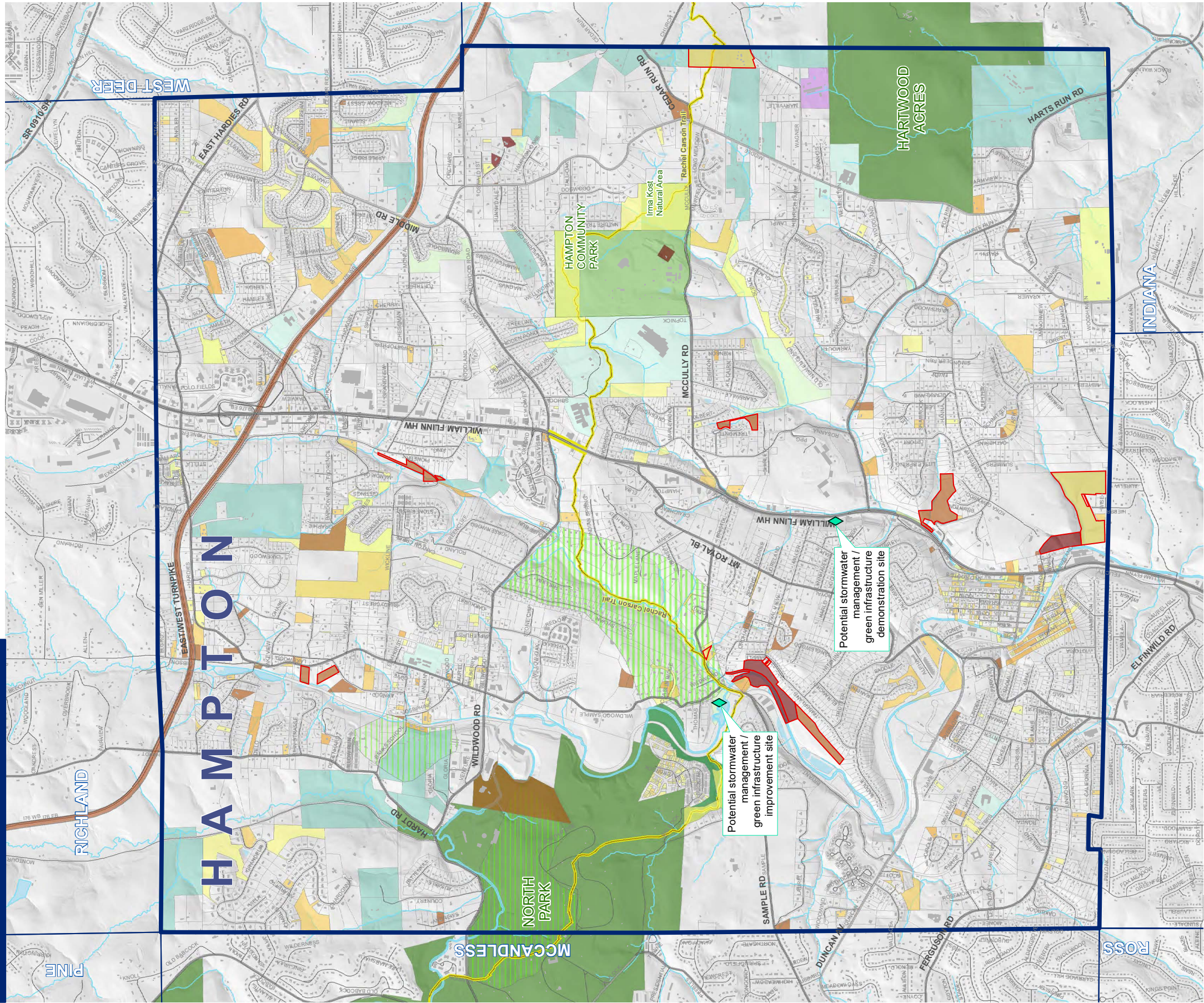
## IMPLEMENTABLE COMPREHENSIVE PLAN

2021

# Conservation Map

### LEGEND

- Potential Acquisition Targets
- Tax Delinquencies (Nov. 2020)**
  - <\$1,000
  - \$1,000-\$5,000
  - \$5,000-\$10,000
  - \$10,000-\$25,000
  - >\$25,000
- Parcel Uses**
  - Township Open Space
  - Clean & Green tax designation
  - Farmstead tax designation
  - School Property
  - Hampton Community Park
  - Allegheny County Park
- Natural Heritage Areas**
  - Exceptional Value
  - High Value



- Preserve open space, woodlands, habitats, clean streams, tree canopy and clean air for future generations, including:
  - » Augment the existing tree canopy by planting on Township properties, and by establishing community/organization partnerships to help residents acquire and plant trees.
  - » Plant native species in Township-owned spaces.
  - » Install green infrastructure on Township properties.
  - » Acquire sensitive properties for resource preservation, passive recreation, and stormwater mitigation.
- Act in a balanced way regarding future commercial and residential development and a wish to support and conserve natural systems, native landscapes and fragile ecological assets.
- Demonstrate leadership by striving to exceed standards set by regulatory agencies, and serve as an example for other Allegheny County communities.
- Educate and involve residents and businesses in conservation efforts.



## Strategies

Strategies established in the 2021 Implementable Comprehensive Plan and revisited during this Plan for protecting green space in the Township of Hampton were:

- 1. Employ green infrastructure to slow runoff, mitigate flooding, and improve water quality.**
  - Assess waterways, outfalls, vernal ponds, intermittent streams, and wetlands to determine where mitigation efforts might make the most significant improvements.
  - Continue to undertake stormwater mitigation projects.
  - Embark on tree plantings on Township land.
  - Assemble a toolkit of funding sources and potential partners.
- 2. Periodically update ordinances to ensure the Township remains proactive with regulations that protect the community’s trees, water, air, and greenspace.**
  - Review ordinances and compare to best practices.
  - The following list provides considerations for updating Hampton’s current ordinances and/or as negotiation points for future land development approvals.
- 3. Add sustainability measures and track performance to improve the functionality of Township infrastructure and operations while also incorporating new cost savings.**

- Pursue certification through the Sustainable Pennsylvania Communities program.
  - After identifying project costs, add line items in the Capital Improvement and General Operations Budgets, for example to purchase solar panels or install geothermal heating wells.
4. **Preserve green space.**
    - Propose a budget line item for future property acquisition.
    - Prioritize parcels whose acquisition would contribute to conservation, passive recreation, or stormwater management goals, or, preferably, all three.
    - Make private owners of larger parcels aware of the option to participate in land trust programs.
  5. **The Township should prepare an Official Map and include the parcels intended as sites for green space acquisition or preservation, stormwater management, future reforestation, or other forms of ecological protection.**
  6. **Create new mechanisms for sharing information and engaging residents.**
  7. **Create air quality benchmarking. ✓ Recommendation was achieved.**
  8. **Join CONNECT, the Congress of Neighboring Communities.**
  9. **Endorse creation of a Pine Creek Watershed Association or Coalition.**

## Connectivity

Hampton's wooded hillsides, valleys, and extensive parkland make it an inviting place for walking and biking. However, the community's transportation network is based on routes for cars and driving. To meet residents' need for places to bicycle, walk, and hike, and to improve quality of life, the Township plans to develop a network of trails, sidewalks and cycling routes. These will increase access to North Park in the west, Hartwood Acres in the southeast, and Hampton Community Park in the center, along with woodland trails in all areas of the Township. Sidewalks will improve access to shops, schools, services, and other destinations.

This large undertaking will need to be pursued over 5, 10, or 20 years, with expertise and funding from the Township, the effort of volunteers and other partners, and grant assistance from public and private sources.

In creating the Township's 2021 Implementable Comprehensive Plan, a focus group was convened in mid-2020. Stakeholders and transportation planners met with Township leaders and the consultant to review concept plans and consider potential improvements for connectivity and trails in and beyond the Township.

Transportation planners from Southwestern Pennsylvania Commission, PennDOT, Allegheny County and Port Authority of Allegheny County listened to representatives of the Township and non-profit groups as well as the consultant explain goals and concepts for an improved walking/biking/hiking network. These professionals vetted the ideas and provided their opinions for project development and priorities.

The following includes the focus group's conclusions and ideas.

### Connectivity Vision

The Township of Hampton enhances the quality of life of existing residents and attracts new residents by providing a connected network of routes that link people to important natural, civic, and commercial assets.

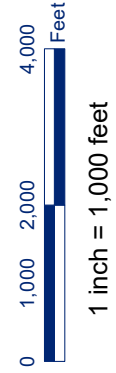
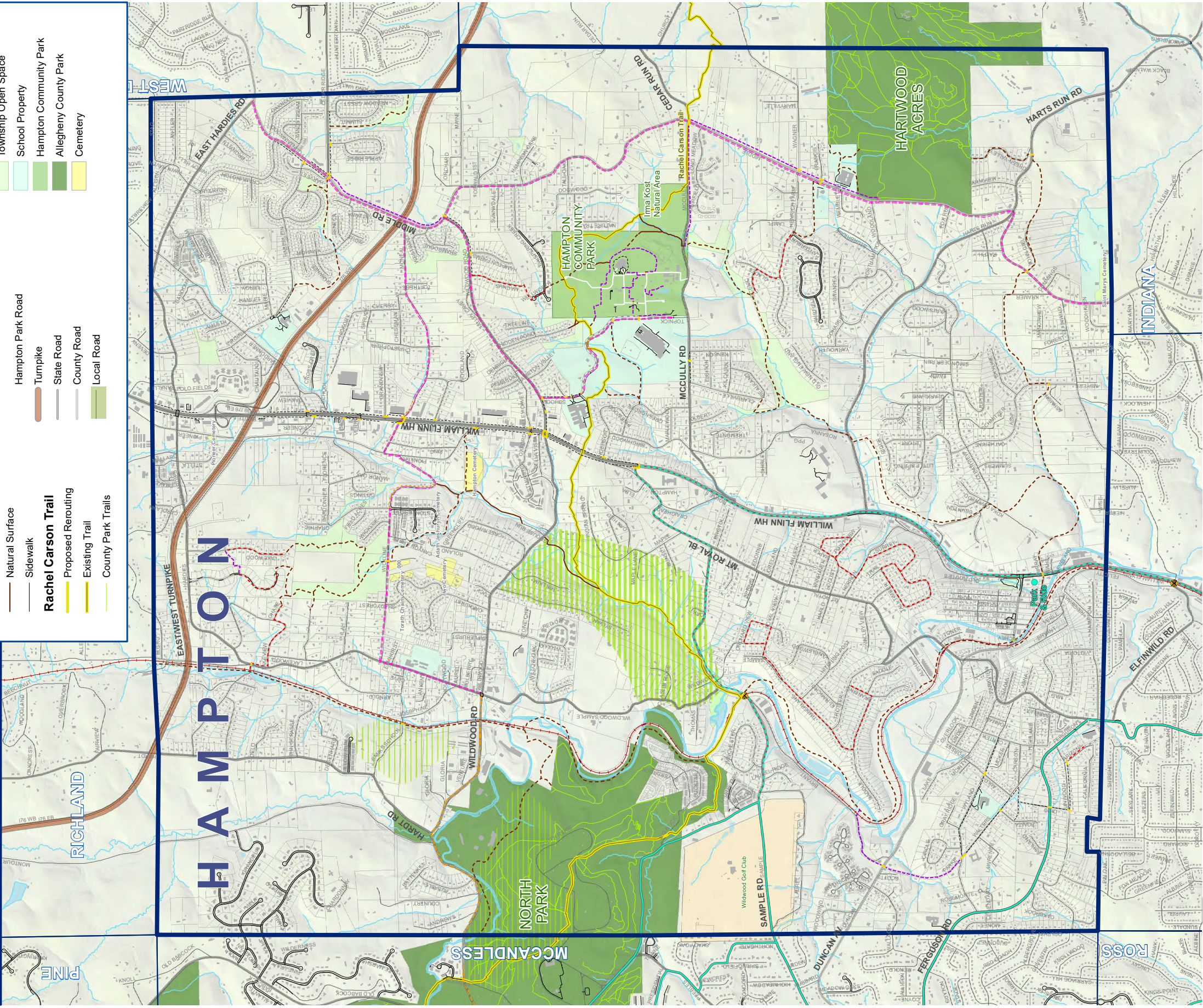
# Hampton Township

## IMPLEMENTABLE COMPREHENSIVE PLAN

2021

### Connectivity Concept Map

<b>Legend</b>	<b>Bike Routes</b>	<b>Parcel Uses</b>
<b>Proposed Trails</b>	<b>Natural Heritage Areas</b>	<b>Transportation</b>
<b>Existing Trails</b>	<b>Rachel Carson Trail</b>	<b>Hampton Park Road</b>



## Background and Context

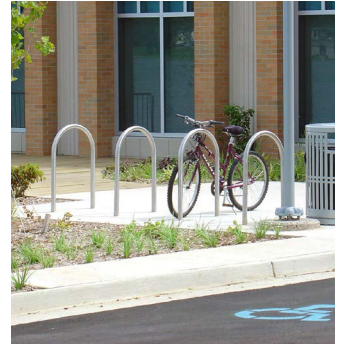
As a suburb that saw initial periods of population growth in the 1920s, 1940s, and 1950s, the Township of Hampton developed as a car-based community with little bicycle and pedestrian infrastructure. Today, more residents are noticing the absence of walking and biking routes, particularly ones that are perceived as convenient and safe. This awareness of gaps in “connectivity” is occurring amidst a rising preference for non-motorized transportation modes and a search for healthier lifestyles.

A stated desire for a more walkable-bikeable community is not new in 2019, however. Both the 2014 Comprehensive Plan update and the 2014 Hampton Park Master Plan suggested new pedestrian and cycling infrastructure. By adding improvements in bicycle and pedestrian connectivity, Hampton would be maintaining parity with other North Hills suburban communities (such as McCandless Township, Pine Township, Marshall Township), which also have made or are preparing similar plans.

Citizens contributing ideas for the Implementable Comprehensive Plan stated they wanted additional walking and biking routes in order to accommodate residents’ desires to be physically active in a safe way; to enable more interaction with the outdoor world; to encourage a sense of community via shared spaces; and for convenience (“to get where we want to go without driving”). People seeking these new amenities are specifically striving to meet the needs of current residents and to help the community remain attractive to new residents.

### The challenges:

- **Disconnected assets:** The Route 8 commercial corridor, amenities at the Hampton School District campus and the Hampton Community Park, and self-contained neighborhoods are well connected for driving but not for walking or cycling.
- **Disconnected parks:** Allegheny County’s North Park and Hartwood Acres bookend Hampton Township’s northwest and southeast corners, with the Hampton Community Park in between. The Rachel Carson Trail serves as a rugged and incomplete connector among these parks. However, the trail is underused, and few residents have convenient points of access to the parks by trail.
- **Safety concerns** – Motor vehicle conflicts, darkness and isolation are some factors to consider in assessing the viability of bike and pedestrian routes. Aside from purely physical characteristics, there also is recognition that drivers in Hampton simply are not expecting to see cyclists and pedestrians sharing the road.
- **Difficult topography:** Hills, valleys, fragile steep slopes and sensitive natural areas create challenges to developing a full trail network.
- **Insufficient access to green space:** Closely related to the points above is a recognition that without bike or pedestrian routes, residents do not have a convenient and pleasant way to get out in nature.



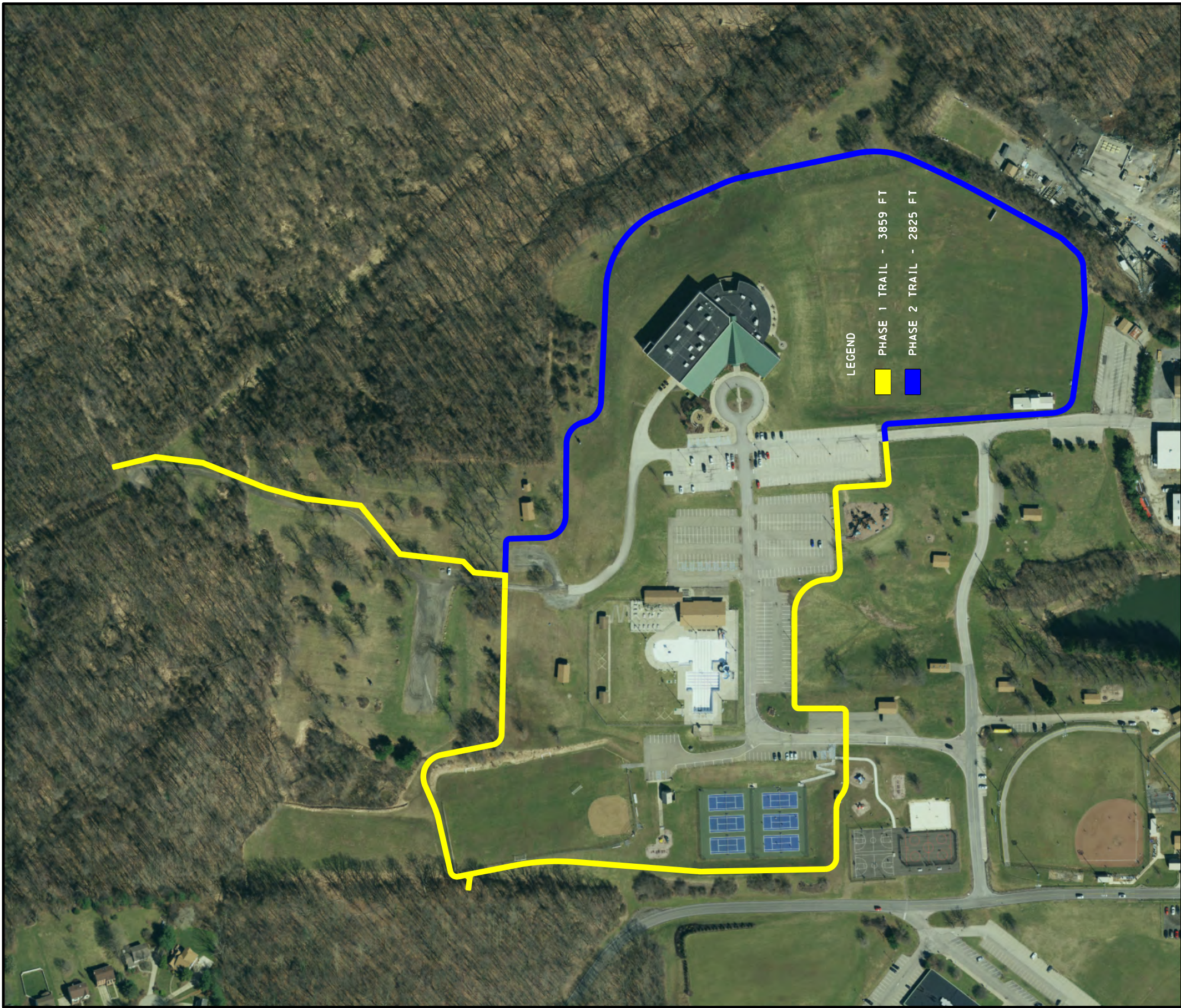
**Connectivity strategies include more trails, bike amenities, and signage.**

- **Existing development:** Route 8 and the Pennsylvania Turnpike both create significant physical barriers. In other places, land or right-of-way access may not be available. Also, roadway rights-of-way often have limitations that constrain the addition of bike lanes or sidewalks. And, since both Hartwood Acres and North Park are owned and managed by Allegheny County rather than the Township, there may be some challenges for development. Along Route 8, the Planning Commission has sought to elicit voluntary compliance from business owners to install pedestrian rights-of-way or sidewalks connecting commercial properties as they are redeveloped; however, this adds costs for development, and business owners have expressed hesitance at assuming the extra liability.
- **Joint action has not materialized:** Residents have sought connections between and among assets owned by the School District and Township at the campus and community park since the 1995 Hampton Community Leisure Survey and Community Park Master Plan. Inaction does not appear to reflect an unwillingness to work together but, rather, an absence of specific plans, delineation of responsibilities, and official decisions to seek grants and/or provide funding.
- **Neighborhood islands** – Neighborhoods are seldom connected to one another or to nearby community assets such as shops, services or schools.

## Looking Ahead

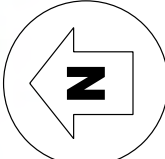

Efforts to enhance connectivity should:

- Help Hampton Township to maintain or improve its position as a highly desirable community, particularly in light of the fact that similar connectivity plans are being undertaken in other North Hills municipalities.
- Enable residents to improve their health through access to the outdoors and facilities for walking and biking.
- Support community and economic development by providing more access to business and civic amenities.
- Support “social connectivity” – community and civic cohesion – by creating opportunities for human interaction in the outdoors.
- Encourage respectful use of green spaces and conservation of natural resources.
- Provide equitable access to shared spaces.
- Recognize that safety must be a primary consideration.
- Recognize that costs of potential projects may be high due to topography and other challenges, and that financial constraints should be considered in establishing priorities.
- Recognize that communication and education are necessary components of developing a bicycle and pedestrian network.
- Be addressed through a combination of short- and longer-term initiatives that have planning and implementation phases, and that include some simple and small-scale steps.



FILE NAME: P:\hamp100\21007 Hampton Park Trail\Phase 2\Figures\21007 Improvements Figure.dgn

PLOTTED: 3/16/2021

 SCALE: 1" = 300'	 Small Firm Client Experience, Big Firm Capabilities 4955 Steubenville Pike, Twin Towers Suite 400 Pittsburgh, Pennsylvania 15205, 412-490-0630		PROJECT NO. hamp100 - 21007 PROJECT: Hampton Community Park Trail Hampton Township, Allegheny County, PA TITLE: Phasing Plan and Preliminary Phase 2 Alignment	EXHIBIT <b>1</b> D.B. <u>    </u> nbs C.B. <u>    </u> reg REV. <u>    </u>

## Strategies

Strategies established in the 2021 Implementable Comprehensive Plan for creating more connectivity in the Township of Hampton were:

### 1. Implement a network of walking and biking routes in the Township.

*In 2021, the Township of Hampton worked with Trans Associates to develop a Trail Phasing Plan and Preliminary Phase 2 Alignment. The initial layout is included in this Chapter.*

*Phase 1 has been completed and Phase 2 has been funded through a Department of Conservation and Natural Resources C2P2 Grant. The initial layout of the trail has been reviewed and discussed among staff and this committee. The development of the trail should begin next Spring.*

- Township creates a Connectivity Team to oversee further development of active transportation routes.
  - Pursue projects suggested by the Connectivity Concept Map.
2. **Develop practical tools related to active transportation network development.**
    - Assemble a toolkit of resources for Connectivity.
  3. **Create design standards and implement a signage and amenities plan.**
    - Determine the amenity styles, sign types and fixtures the community likes.
    - Amenities for trails, sidewalks and pedestrian connectivity typically include these items, installed at visible and convenient locations.
    - Select and install trail signs.
    - Install cycling signs as routes are developed.
  4. **Consider creating a Township active transportation plan.**
  5. **Engage volunteers to complete trail related construction projects.**
  6. **Include the proposed connectivity routes on an Official Map.**
  7. **Provide in the Township’s Subdivision and Land Development Ordinance (SALDO) a requirement that developers install concurrent sidewalks when new development occurs.**
  8. **Add communications improvements.**



Cycling pilot project concept map. (See 2021 Hampton Township Implementable Comprehensive Plan)

## Summary

As Hampton’s sports and recreation continue to develop, the need for additional spaces to accommodate new or expanding programs, improved facilities and additional funding strategies should be revisited annually.

# PUBLIC PARTICIPATION

## Hampton Community Library

day	Wednesday	Thursday	Friday	Sat
<p>er! 😊</p> <p>10:30am</p> <p>ur 😊</p> <p>orhood!</p> <p>11:30pm</p> <p>All Ages</p> <p>elcome!!</p> <p>Mask</p> <p>ed!! 😊</p> <p>Dec. 14th</p> <p>ymes!</p> <p>Games!</p>	<p><u>Book Banter!</u></p> <p>Wednesday,</p> <p>7:00pm</p> <p>Families w/ grade school Children!</p> <p>Dec. 22<sup>nd</sup></p> <p>Theme:</p> <p><i>Holiday Traditions</i></p> <p><u>Mystery Book Club!</u></p> <p>Wed. Dec. 15<sup>th</sup></p> <p>6:30pm</p> <p>Book: Stillhouse Lake</p> <p>By: Rachel Caine</p>	<p><u>T</u> is for 😊</p> <p><u>Toddler!</u></p> <p>10:00 am - 10:30am</p> <p><u>In Your</u> 😊</p> <p><u>Neighborhood!</u></p> <p>11:00pm - 11:30pm</p> <p>Indoors! - Masks Optional!</p> <p>All Ages! 😊</p> <p><u>Cooks + Books</u></p> <p>Thurs. Jan. 27<sup>th</sup></p> <p>6:30 - 8:00pm</p> <p>Theme: figure friendly!</p> <p>Food! Fun! Fee: \$2.00</p>	<p>Betty's <u>Book Buzz!</u></p> <p>See you in January!!</p> <p>Happy Holidays!</p> 	<p>Boo</p> <p>Bab</p> <p>De</p> <p>2</p> <p>Th</p> <p>H</p> <p>Wed</p> <p>Clo</p>

# Public Participation & Community Engagement

Public Involvement was a key component of the development of the Township of Hampton's Comprehensive Recreation, Parks, Open Space and Greenway Plan. This process included seven methods which provided valuable information. The methods used to gather community input included: Steering Committee, 2 public meetings, digital and paper questionnaires, and key person interviews. The information received through each method was reviewed and discussed among the Steering Committee and consultant.

Seven mechanisms to gather public input included:

1. The **Steering Committee** convened six times between November 2021 - August 2022 to represent the community in meetings with the Consultant. The Township, library and committee members publicized the meetings.
2. A **website** was created so the community could make comments and follow the plan's direction.
3. The committee held a **public meeting** on June 15, 2022 at the local Farmer's Market located in Community Park. The steering committee and consultant gathered input at five stations: 1) Programming and Special Events, 2) Park Facilities, 3) Trails and Connectivity, 4) Conservation of Natural Resources, and 5) The Heart of the Community.
4. The consultant created a **digital recreation questionnaire** to collect information concerning residents' recreational interests. A total of 619 individuals responded.
5. The Steering Committee distributed **paper questionnaires** during the first public meeting. One hundred forty-six individuals completed the paper survey, and the data was inputted into the digital data base.
6. The consultant **interviewed key persons** and identified community organizations who represented a variety of interests in recreational opportunities and operations.
7. The consultant presented the findings and draft recommendations of the plan at a **public meeting** for comment.

Each public participation opportunity provided the committee and consultant with information to better understand the needs, desires, concerns and issues of Hampton's residents. This process together with the inventory and analysis guided the development of recommendations for improving parks and recreation in Hampton.

This chapter summarizes the public participation process and results for each method. Details of each public input method are in the Appendices.

## Steering Committee

The fourteen-member Steering Committee met five times throughout the planning process assisting the Consultant to understand community characteristics and to

serve as a sounding board at each step of the Plan. The committee was comprised of the Township residents representing the Recreation and Parks Board, the Township Council, various Township staff, and members of other Township businesses and groups. The varied interests of the Committee provided a balanced outlook at recreation, parks, and open space in the Township.

### Committee members' functions:

- Act as a sounding board for ideas presented by the community
- Represent the community throughout the process
- Assist in the development of the public input forums
- Provide feedback and review of the plan
- Identify issues, concerns, and opportunities related to parks and recreation
- Guide the development of vision, goals, and strategies for implementation of the Plan

## Public Meetings

A public meeting was held at the beginning of the process to present information related to existing parks and recreation in the Township and gather citizen input for future planning.

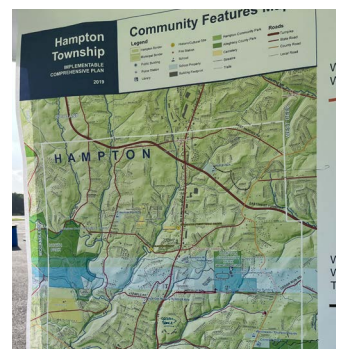
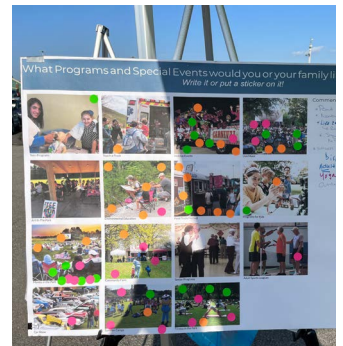
### Public Meeting: June 15, 2022

An extensive publicity campaign including social media promotion through the Township, school district and community library, distribution of flyers throughout the community, website posts and word of mouth, invited local residents to the Farmer's Market at Community Park to share their thoughts about recreation, parks, open space and greenways in the Township.

The Consultant provided an overview of the planning process. The Public Meeting was advertised and facilitated as an Open House. Four stations were facilitated with the assistance of the Steering Committee, the Township Manager and the Consultant to provide residents with an opportunity to voice their opinions and identify key issues. Approximately thirty to forty people participated in the discussion and activities.

#### The five stations included:

1. **Programming and Special Events:** The Township of Hampton offers many special events and programming, and is looking for ways to increase its offerings.
2. **Park Facilities:** The Township's 195-acre Community Park offers many amenities for its residents. The public provided insight on what they love about their park, but also some ideas on improvements.
3. **Trails and Connectivity:** An important part of the future Hampton wants for its residents, the public was asked to build upon the ideas it has already voiced during the Implementable Comprehensive Plan.
4. **Conservation of Natural Resources:** Hampton has many natural resources it desires to conserve and values the insight of its residents in continued conservation efforts.



5. **The Heart of the Community:** Hampton does not have a “downtown”, but it would like to see if their residents have ideas on making the Community Park, Library and Rec Center more of a center of the community.

### Top Priorities Identified Through Public Discussion:

- Dog park
- Trails, including existing trail enhancements
- Splashpad
- Disc Golf
- Pond
- Community events: holiday, music, movies
- Fitness in the park

## Digital Questionnaire

The Consultant, with input from the Steering Committee, developed a twelve-question digital questionnaire to allow residents to express their thoughts and concerns regarding recreation, parks and open space in the Township.



The questionnaire respondents were demographically comparable with the make-up of the Township. Completed surveys totaled 619 representing approximately 9 % of the Township’s households. Paper surveys were also available. A copy of the survey and detailed response results are contained in the appendix.

The following summary highlights the results of the questionnaire:

- 97% of the respondents reside in the Township of Hampton
- 73% of the respondents desire the Township to develop walking and biking trails for connectivity
- 76% of the respondents enjoy outdoor recreation (hiking, biking, fishing)
- 62% of the respondents use Community Park on a weekly basis
- 36% of respondents think the best feature of Community Park is the Community Center/Library

The survey results provide a foundation for future planning efforts in parks, recreation, trails, open space, and greenways. The results indicated the focus the Township should have for its park and recreation efforts in the future. The most desired amenity was for walking and biking connectivity (73%) followed by protecting open space and natural resources (65%), expanded recreational programs and activities (56%), and improving the community pool and activities (44%).

### The top six experiences residents want in recreational activities:

1. 76% Outdoor recreation
2. 73% Concerts/Movies
3. 65% Exercise and Fitness Activities
4. 64% Special Events (holiday events, fairs, contests, etc.)
5. 44% League Sports (baseball, basketball, soccer, etc.)
6. 37% Arts and Crafts

When asked how important it is for the Township to continue to dedicate tax dollars towards the investment of public parks, trails and open space 54% of the respondents indicated it was extremely or somewhat important.

## Key Person Interviews

The steering committee and Township manager identified 25 people to contact for interviews. These individuals were selected as they could provide valuable input regarding parks and recreation. They included parents, frequent park users, those involved in local sports associations, new residents and long-time residents. Of the 25 contacted, eight responded and were interviewed. Each key person was asked a series of questions related to his/her particular interest or expertise in Hampton's parks, recreation, open space and greenways. Interviews were conducted in one of three ways: in person, via telephone, or e-mail.

The following is a summary of the interviews and topics discussed with each stakeholder. Detailed notes from the interviews are located in the appendix.

## Key Person Takeaways

### Strengths

#### Amenities

- Multiple fields, trails, and parks
- Sidewalks
- Playground at the community park
- New tennis courts
- Air quality, trees, and open green space
- Maintenance of parks and recreation facilities
- Summer camps and activities for kids
- Pet friendly
- Opportunities for various age groups
- Large family farm donated for parkland and recreation

## Hampton's Facilities

- Library
- Sidewalks that were recently added
- Community Center
  - » Access to the community center
  - » Proximity and accessibility to other recreation facilities
  - » Keeps children and youth occupied and out of trouble
- The pool
- Community Park

## Problems to Solve

### Connectivity

- Unsafe connection to the Rachel Carson Trail
  - » Creating a pedestrian overpass would make it safer for pedestrians
- The walkway to the playground
  - » Limited accessibility
  - » Hard edge impedes strollers and wheelchairs
- Sidewalks
  - » Limited walkability from neighborhoods to parks and schools
  - » Areas without sidewalks (around the pond, middle and high schools, and McCully Rd.)
- Needs improved facilities for pedestrians or bicyclists

### Facilities

- Community Center
  - » Not as inclusive due to fee for membership
  - » Indoor facilities need enhancement (e.g.: indoor gym)
  - » Limited accessibility (parking is not close and doors are difficult to access)
  - » Walking path is being washed away by rain
  - » Needs new paving
  - » Solar lights are not efficiently lit
- Pond
  - » Deck is often covered in water
  - » Not covered so trash is often inside
  - » More/closer bathrooms
- Basketball courts are in disrepair
- More shade, especially around playground areas

- Preservation of Green Space
  - » Losing parks and green space due to large residential development and zoning changes
  - » Stormwater management such as a rainwater garden
- Public Safety
  - » Lighting in parks
  - » Speeding near schools
- Sense of Community
  - » Lack of diversity in the community overall
  - » More activities for kids (zipline, playhouse, etc.)
  - » More passive recreation for older residents and those with accessibility issues
  - » More free recreation opportunities
- Disc golf
- Bocce

## Vision for the Future

### Facilities

- Splash pad
- Overpass for Rachel Carson Trail
- Community garden
- Sidewalk to McCully so that neighborhoods have a pathway to the community center
- Leave the track more open
- Indoor pool
- New playgrounds
- Better access from outside of the park (sidewalks)
- Discouraging car traffic
- Add amenities such as pavilions, swings, and additional facilities
- Expand the walking path
- More convenient bathrooms
- More activities for kids
- Good parking situation

### Connectivity

- More connectivity within the Township and between neighborhoods
- More sidewalks

## Recommendations for Improving the Township

### Regarding the School District

- Increased environmental education
- The school district owns a lot of woods that could be used for education
- Work with local college and universities
- Create a trail for students
- Work together better to maintain their respective responsibilities such as sidewalks
- Increased communication

### Recommendations for Community Park's Main Street

- Event Ideas
  - » Evening events or gatherings
  - » Food trucks
  - » Farmers Market
  - » Movies
  - » Fireworks
  - » Movie nights in the park
  - » Highlight more local residents and their businesses
  - » Street fairs
  - » Touch a Truck event
  - » Car show
- Facility Ideas
  - » Places for people to sit and congregate
  - » Amphitheater or stage at the bottom of the hill
  - » Shelter for Farmer's Market
  - » Parking lot gets really hot in the summer
  - » Lighting
  - » Concession stands
  - » Outdoor games or activities that don't require much additional non-pervious surface structures such as buildings, roads, or parking lots

### Other Notes

- There is an existing map of our Township parks and already designated open spaces (late 1990's). It was completed after a two-year study done by a group of experienced volunteers and directed by the EAC.
- There are also the Pine Creek Watershed Study Maps being done since 1975.
- Hampton portion of Rare Species/high Biodiversity Areas is done by the West PA Conservatory for Allegheny County

# Public Hearing

On April 26, 2023 the Plan was submitted to the Township Council at their regular meeting for adoption.

# CHAPTER 4: RECOMMENDATIONS & IMPLEMENTATION STRATEGIES



# Now what do we do?

The next step in the Township of Hampton’s desire to provide it’s residents with excellent park and recreation opportunities is to supply the government leaders, various board members, volunteers, and citizens with recommendations and strategies to achieve the Township’s Park and Recreation Vision and Goals.

## Defining a Vision for the Future

In order to express the intent of the Township of Hampton’s Park and Recreation goals, a Vision was created:

### VISION

HAMPTON TOWNSHIP PARKS AND RECREATION ENHANCES THE QUALITY OF LIFE OF EXISTING AND FUTURE RESIDENTS BY PROVIDING SUSTAINABLE FACILITIES, DIVERSE AND INCLUSIVE PROGRAMS, AND OPEN SPACES.

## Recommendations, Strategies, and Priorities

With a Vision in place, the following five recommendations and goals have been created with the intent of making the Township of Hampton’s already great Parks and Recreation Department even better.

### RECOMMENDATIONS AND GOALS

## THE FUTURE OF THE TOWNSHIP OF HAMPTON’S PARKS AND RECREATION

- Protection of Natural Resources
- Expand Connectivity and Opportunities
- Establish Strong Partnerships and Communication Strategies
- Expand Diverse and Inclusive Recreation Programs
- Enhance Park Facilities and Accessibility

The following pages provide the action steps the Township can take to accomplish the goals they have set. Each step will include its priority (high, medium, low), ideas of how to execute that step, and the party responsible for setting the action in motion. Also included are the SCORP priorities the goal falls under, as referenced in the intro of this Plan.

# Protection of Natural Resources

## SCORP Priorities:

### ► High-priority strategy

#### 1. Improve the quality of life and community health of Hampton residents and business owners through access to healthy air, streams, and green spaces.

- Implement a Lawn to Meadow Conversion Program within the Park
  - » Funding and seed sources are available through the PA DCNR and Penn State Extension.
- Encourage residents to convert lawns to meadows in appropriate areas.
  - » Resources are available through [www.extension.psu.edu](http://www.extension.psu.edu)
- Encourage and facilitate land conservation options (and associated tax benefits) available to private landowners, such as conservation easements and land donations, deed restrictions, and planned giving of funds for green space conservation as part of estate planning as defined on conservation map developed during the Implementable Comprehensive Plan (included in Chapter 2, page 26).
- Add information to the Township's website and advertise to residents that such options are available.

- **Responsible Parties:** Department of Community Services, Planning Commission, Environmental Advisory Council

### ► High-priority strategy

#### 2. Comply with MS4 (Municipal Separate Storm Sewer System) requirements during redevelopment of park and connectivity amenities.

- Implement Stormwater concepts outlined in the Implementable Comprehensive Plan.

- **Responsible Parties:** Township Council, Department of Community Services

### ► Mid-priority strategy

#### 3. Educate and involve residents and businesses in conservation efforts.

- Conduct internal and external public outreach/education related to stormwater management and Sustainability Initiatives.
  - » Establish partnerships with EAC and the Hampton Township School District.

- **Responsible Parties:** School District, Environmental Advisory Council, Park and Recreation Department

Sustainable  
Systems



Funding &  
Economic  
Development



► **Mid-priority strategy**

**4. Develop sustainable operations and management practices for the Community Center, facilities and parklands.**

- Set a goal for how much land to preserve and what it would cost to pay for acquisitions and/or easements in addition to capital investments, maintenance or programming as appropriate.
- Determine Key Parcels.
- Coordinate with Allegheny Land Trust on voter education as well as management of acquired land or easements.
- Establish Funding Options.

- **Responsible Parties:** Township Council, Township Manager

► **Mid-priority strategy**

**5. Incorporate shade tree planting, rain gardens and landscaping as outlined in this plan. Use a variety of native plants.**

- Develop a tree planting strategy and maintenance program.
  - » Establish a partnership with EAC
- Follow the phasing on native planting
  - » Central Play Area
  - » Upper Orchard
  - » Community Center Courtyards
  - » Sports Court Play Area (during redevelopment)
  - » Trails
  - » Pond Education Trail (during redevelopment)
- Seek opportunities to build onto the green corridor network through land or easement acquisition.
- Continue to partner with Rachel Carson Trail Association to prioritize trail needs and coordinate events.
- Develop and adopt an approved native tree list. (An example can be found in the Appendix)

- **Responsible Parties:** Township Council, Department of Community Services, Parks and Recreation Department, School District (all in partnership with the EAC)

## ► Mid-priority strategy

### 6. Redefine the pond to better serve the community. Stormwater management, education opportunities, and accessibility should be defined.

- Discuss educational opportunities with the Hampton Township School District, homeschoolers, and private partners.
- Replanting with native species.

- **Responsible Parties:** Parks and Recreation Department, Department of Community Services, School District

## Native Plantings

Climate change resilient trees for Pennsylvania should be southern tree species that tolerate or prefer wetter soil such as:

- Sycamore
- Hackberry
- Boxelder
- Eastern redbud
- Serviceberry
- Witch hazel
- American Hornbeam
- Sweet bay Magnolia
- Dogwood
- Redbud
- Fringe Tree
- Mountain Laurel
- Rhododendron
- Tulip Tree
- Cucumber Magnolia
- Kentucky Coffee tree

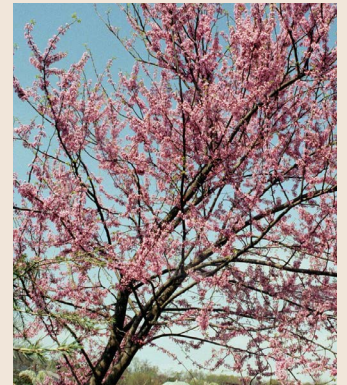
Other adaptable species likely to be climate change resilient include:

- Slippery elm
- Black gum
- Shortleaf pine
- Eastern hophornbeam

## TreeVitalize

TreeVitalize is a program to help communities restore and protect the state's urban tree canopy through various grants and educational workshops. The program delivery is made possible through several key partners:

- [PA DCNR Bureau of Forestry](#)
- [TreePennsylvania](#), the Pennsylvania Urban and Community Forestry Council
- [Pennsylvania Horticulture Society](#)
- [Western Pennsylvania Conservancy](#)
- [Penn State Extension](#)



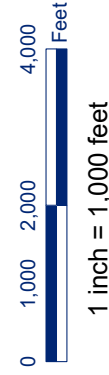
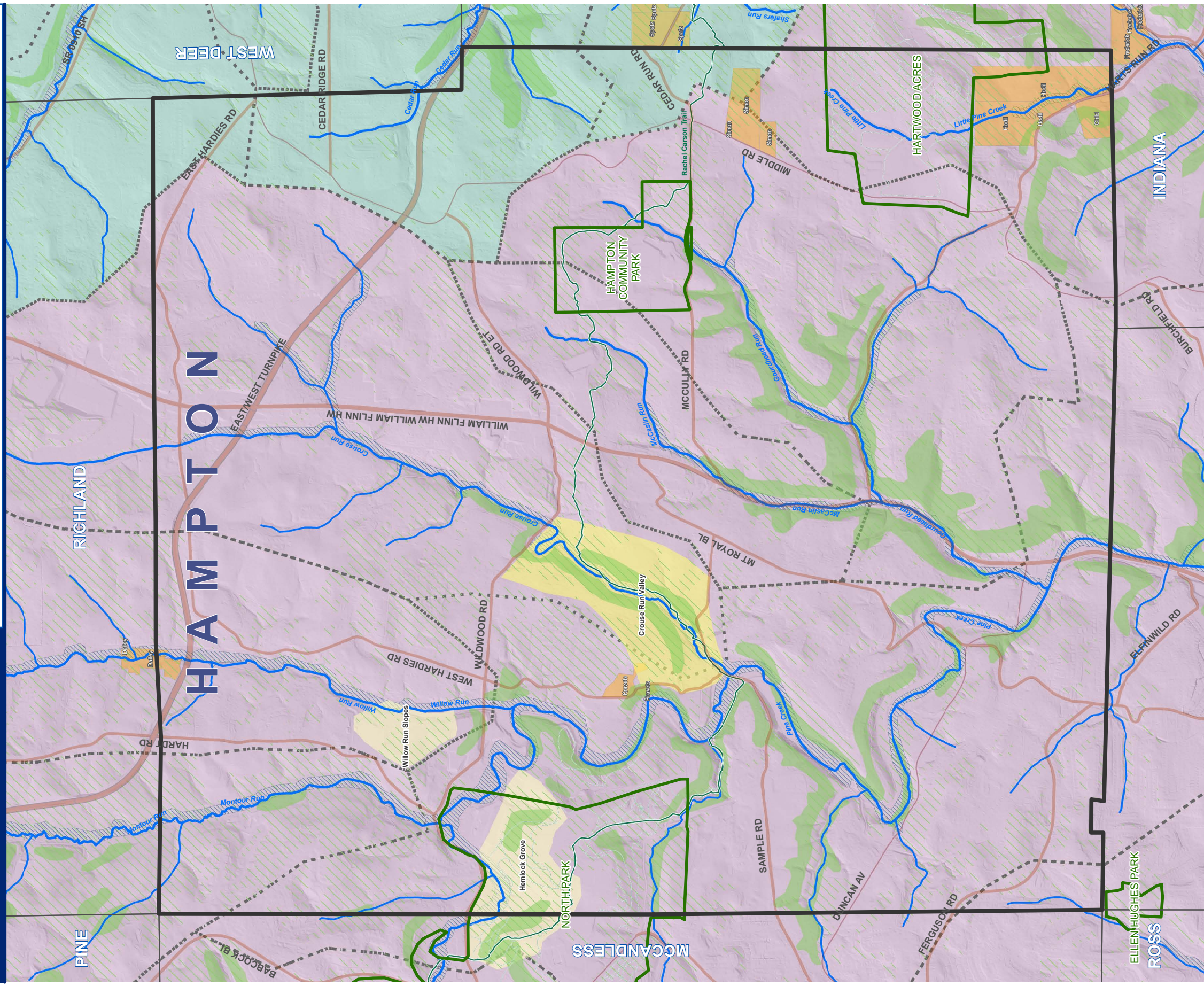
# Hampton Township

## IMPLEMENTABLE COMPREHENSIVE PLAN

2019

# Natural Systems Map

- Legend**
- Hampton Border
  - Municipal Border
  - Park Boundary
  - Trails
  - Streams
  - Woodland Areas
- Watershed Basin Boundary**
- Watersheds**
- CEDAR RUN BASIN; DEER CREEK BASIN; SHAFFERS RUN BASIN; WEST BRANCH DEER CREEK BASIN
  - CROUSE RUN BASIN; GOURDHEAD RUN BASIN; LITTLE PINE CREEK BASIN; MCCASLIN RUN BASIN; MONTOUR RUN BASIN; NORTH PARK BASIN
  - LAKE BASIN; PINE RUN BASIN; WILLOW RUN BASIN
- County Natural Heritage Area**
- Steep Slopes >25 Percent
  - Agricultural Security Area
  - 100-Year Flood Zone
  - Exceptional
  - High



# Expand Connectivity and Opportunities

## SCORP Priorities:

Health and Wellness



Recreation for All



Sustainable Systems



Funding & Economic Development



### ► High-priority strategy

#### 1. Implement a network of walking and biking routes in the Township by funding and building one of the suggested pilot trail segments.

- Continue to build out the cycling/pedestrian network through trails, paths and sidewalks to create safe, attractive and convenient connections between and among destinations and neighborhoods.
- Implement high quality connections based on the Connectivity Concept Map.
- Continue to build out connections to new or existing connections which will allow residents to access a park, school, or greenway within a 10-minute walk.
- Implement the suggestions found in Chapter 2, Strategy 1: Implement a Network of Walking and Biking Routes found in the 2021 Hampton Township Implementable Comprehensive Plan.

- **Responsible Parties:** Township Council, Department of Community Services, Planning Commission, Rachel Carson Trail Association

### ► High-priority strategy

#### 2. Develop practical tools related to development of an active transportation network including seeking funding sources and partners to implement projects.

- As part of the maintenance program, evaluate whether connectivity and active transportation improvements can be made part of projects on the annual paving projects.

- **Responsible Parties:** Township Council, Department of Community Development

## ► High-priority strategy

3. **Create design standards and implement a signage and amenities plan in support of trail use across the Township. Consistent and precise signage will eliminate confusion and provide additional safety measures.**
  - Strategically use communications to reinforce the identity and image for the Township of Hampton and build a sense of community among residents and business owners.
  - Develop wayfinding and signage standards throughout the park including facility signage. Use technologies such as QR Codes to enrich outdoor experiences through technology.
    - » Contact the Hampton Township Fire Department to determine internal addresses for the park facilities.
    - » Implement suggestions found in Chapter 2, Strategy 3: Create design standards and implement signage and amenities plan found in the 2021 Hampton Township Implementable Comprehensive Plan.
  - Develop a self guided Storybook Trail with signage in partnership with the Hampton Community Library.



### Storybook Trails

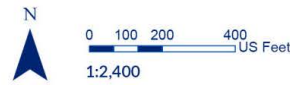
Storybook trails combine the joy of reading and the outdoors! The storybooks are presented on child-height panels along a short trail which promotes adult-child interaction. It helps to build children’s interest in reading while encouraging healthy outdoor physical fitness and social engagement with parents, siblings and friends.

The child-height panels are typically durable pedestal display frames which allow for story spreads to be easily removed and replaced with new stories while also being protected between two pieces of acrylic. A local provider of Storybook Trail Exhibits is Pannier Graphics: [www.panniergraphics.com](http://www.panniergraphics.com)

# Hampton Township

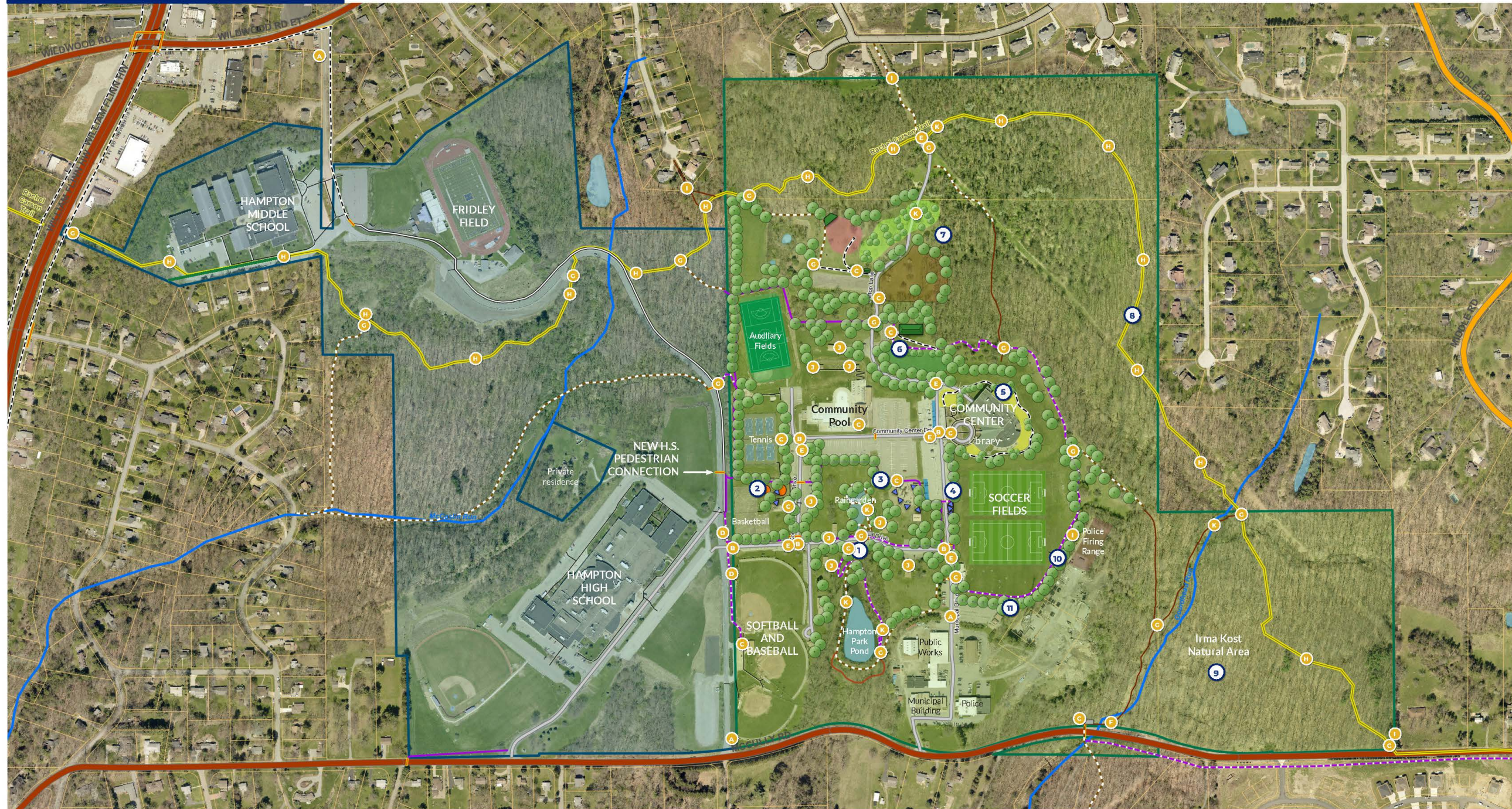
COMPREHENSIVE RECREATION,  
PARK AND OPEN SPACE PLAN

## Community Park Signage Plan



### Legend

- |   |   |  |
|---|---|--|
| <ul style="list-style-type: none"> <li><span style="color: green;">■</span> Hampton Community Park</li> <li><span style="color: blue;">■</span> School Property</li> <li><span style="color: yellow;">■</span> Parcels</li> </ul> | <ul style="list-style-type: none"> <li><span style="color: orange;">—</span> Crossing</li> <li><span style="color: purple;">—</span> Crushed Limestone</li> <li><span style="color: brown;">—</span> Natural Surface</li> <li><span style="color: grey;">—</span> Paved</li> <li><span style="color: black;">- -</span> Sidewalk</li> </ul> | <ul style="list-style-type: none"> <li><span style="color: brown;">—</span> Natural Surface</li> <li><span style="color: grey;">—</span> Sidewalk</li> <li><span style="color: purple;">—</span> Crushed Limestone</li> <li><span style="color: grey;">—</span> Paved</li> <li><span style="color: grey;">—</span> Sidewalks</li> <li><span style="color: yellow;">—</span> Rachel Carson Trail</li> </ul> |
|---|---|--|



### PROPOSED COMMUNITY PARK IMPROVEMENTS

- 1 POND AQUATICS EDUCATION TRAIL
- 2 SPORTS COURT PLAY EQUIPMENT
- 3 CENTRAL PLAY EQUIPMENT
- 4 SOCCER VIEWING AREA
- 5 COMMUNITY CENTER COURTYARDS
- 6 PAVILION AND EVENTS LAWN
- 7 UPPER ORCHARD
- 8 RACHEL CARSON TRAIL SEGMENT
- 9 IRMA KOST NATURAL AREA
- 10 CONNECTIVITY NETWORK
- 11 TREE PLANTINGS

### PROPOSED SIGNAGE

- A PARK IDENTIFICATION SIGN
- B STREET NAME SIGN
- C FACILITY SIGN
- D LARGE DIRECTIONAL SIGN
- E MEDIUM DIRECTIONAL SIGN
- F TRAIL KIOSK
- G TRAIL DIRECTIONAL SIGN
- H TRAIL MARKER
- I HAZARD OR BOUNDARY SIGN
- J SHELTER NAME SIGN
- K INTERPRETIVE SIGN
- L PAVILION DIRECTIONAL SIGN

# PROPOSED SIGNAGE



**3** PARK IDENTIFICATION SIGN



**4** STREET NAME SIGN



**5** MEDIUM DIRECTIONAL SIGN



**6** TRAIL KIOSK



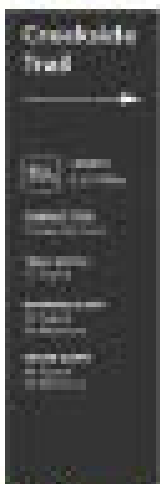
**7** HAZARD OR BOUNDARY SIGN



**8** SHELTER NAME SIGN



**E** ENCLITY SIGN



**T** TRAIL DIRECTIONAL SIGN

**D** LARGE DIRECTIONAL SIGN



**T** TRAIL MARKER



**I** INTERPRETIVE SIGN

**SCORP Priorities:**

- **Responsible Parties:** Department of Community Services, Parks and Recreation Department, Fire and Police Departments



# Establish Strong Partnerships and Communication Strategies

## ► High-priority strategy

1. **Develop a committee that meets regularly to discuss upcoming events, policies, and procedures related to School District, Township, and Association events and facility use, including indoor and outdoor aquatic programs and use of facilities.**

- Elect an official of the School Board or District Staff, a Council Member, and a Youth Sports Association Representative to initiate this conversation and determine the goals of the committee.
- Review sample agreements and develop Township facility use agreements.

- **Responsible Parties:** Township Council, Parks and Recreation Department, School District, Athletic Associations

## ► High-priority strategy

2. **Educate community members on the benefits of partnerships between the School District, Sports Associations, Township Staff, and other community organizations.**

- Identify funding opportunities and strategies for sport field upgrades.

- **Responsible Parties:** Township Council, Parks and Recreation Department, School District, Athletic Associations, Environmental Advisory Council

## ► High-priority strategy

3. **Promote the most efficient use of Township wide facilities including Community Park, School District facilities and private facilities to increase usage and availability to all user groups.**

- Identify the growing needs and opportunities to share the facilities, such as the community and school district pool and gymnasium.

- **Responsible Parties:** Parks and Recreation Department, School District, Athletic Associations



► **High-priority strategy**

4. **Increase consistent communications through social media, Township website, newsletters, email blasts, and Township magazines. Include monthly updates through each venue.**

- **Responsible Parties:** Parks and Recreation Department, Administration/Communication Departments



► **Mid-priority strategy**

5. **Increase opportunities for public engagement and outreach to include the youth of the community, summer employees, Scouts and Clubs.**

- **Responsible Party:** Parks and Recreation Department



SCORP Priorities:



# Expand Diverse and Inclusive Recreation Programs

▶ **High-priority strategy**

1. **Increase community events such as Community Days, Farmers Markets, hikes, adult only events, and family-oriented events.**

- **Responsible Party:** Parks and Recreation Department

▶ **High-priority strategy**

2. **Improve, create and provide more recreational opportunities for the community. Build relationships with other organizations to assist in expanding events and activities.**

- Develop formal agreements with the School District and other organizations for the use of Township facilities such as the pavilions, parking, pond, sport fields and Community Center.
- Expand fitness in the park opportunities for all ages such as yoga a walking club for young families, and a storybook trail.
- Develop programs for diversity and inclusiveness of individuals with special needs.
- Provide programs geared toward dog obedience, training and exercise.
  - » Form partnerships with local dog daycares and trainers.
- Develop opportunities for environmental programs and nature based activities.
  - » Reach out to the School District, EAC and Rachel Carson Trail Association to and form a partnership for further programming.

- **Responsible Parties:** Parks and Recreation Department, Environmental Advisory Council, Rachel Carson Trail Association, Social Services, Community Library, School District

## ► High-priority strategy

### 3. Partner with the Hampton Community Library and other organizations to offer additional inclusive programs such as special needs programs, senior programs, environmental education and teen programs.

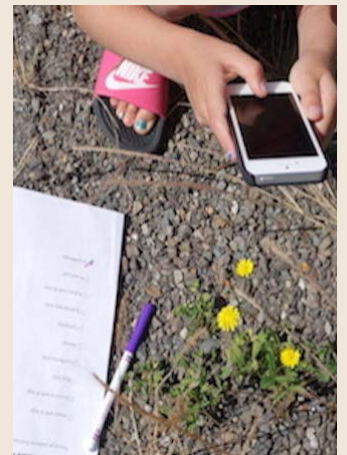
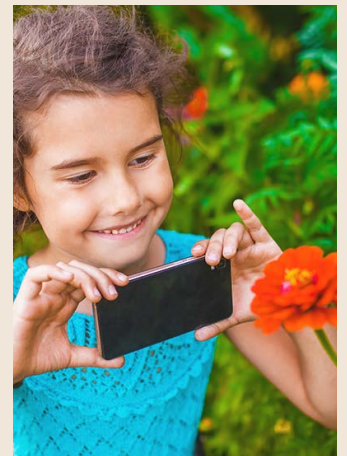
- **Responsible Parties:** Parks and Recreation Department, Community Library, Social Services, Community Partners

## Inclusive Programming

The National Wildlife Federation provides innovative ways to connect children with nature. Today the amount of time kids spend outside is alarmingly low, only minutes per day, while screen time is at an all-time high. Connecting children and nature has important health benefits. Studies show outdoor time helps children grow lean and strong, enhances imaginations and attention spans, decreases aggression, and boosts classroom performance. In addition, children who spend time in nature regularly are shown to become better stewards of the environment.

There are many apps and websites available to encourage children to participate in outdoor activities. A sampling includes:

- [www.naturefind.com](http://www.naturefind.com) - NatureFind is a great hub for local nature-based organizations and nature enthusiasts to share favorite places, upcoming events, interests, photos and more.
- [www.kidweatherapp.com](http://www.kidweatherapp.com) - A true weather app for kids designed by a six-year-old boy (and his meteorologist dad).
- <https://starwalk.space/en> Star Walk is the most beautiful stargazing app. It will become your interactive guide to the night sky.
- <https://www.inaturalist.org/> - iNaturalists is a joint initiative of the California Academy of Sciences and the National Geographic Society. Record your encounters, learn about nature, create useful data, become a citizen scientist, or run a Bioblitz.



**SCORP Priorities:**

# Enhanced Park Facilities and Accessibility



▶ **High-priority strategy**

1. **Connect facilities through accessible routes including pavilions, sports fields, pond and play areas.**

- **Responsible Parties:** Department of Community Services, Parks and Recreation Department

▶ **High-priority strategy**

2. **Construct ADA parking and viewing areas for each facility.**

- **Responsible Parties:** Department of Community Services, Parks and Recreation Department

▶ **High-priority strategy**

3. **Annually, review capital projects and facility improvements in the Community Center and in the Community Park.**

- **Responsible Parties:** Township Council, Department of Community Services, Parks and Recreation Department

▶ **High-priority strategy**

4. **Establish sustainable funding sources including program fees, facility rentals, fundraising, grant and private funds.**

- **Responsible Parties:** Township Council, Parks and Recreation Department

▶ **High-priority strategy**

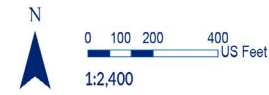
5. **Develop a 10-year fiscal maintenance plan associated with capital improvement projects, maintenance equipment replacement and purchasing, existing facilities, and administration and maintenance staffing needs.**

- **Responsible Parties:** Township Manager, Department of Community Services, Parks and Recreation Department

# Hampton Township

## COMPREHENSIVE RECREATION, PARK AND OPEN SPACE PLAN

# Community Park Phasing Plan



### Legend

- |  |  |  |
|--|--|--|
| <ul style="list-style-type: none"> <li>Hampton Community Park</li> <li>School Property</li> <li>Parcels</li> </ul> | <b>Proposed Trails</b> <ul style="list-style-type: none"> <li>Crossing</li> <li>Crushed Limestone</li> <li>Natural Surface</li> <li>Paved</li> <li>Sidewalk</li> </ul> | <b>Existing Trails</b> <ul style="list-style-type: none"> <li>Natural Surface</li> <li>Sidewalk</li> <li>Crushed Limestone</li> <li>Paved</li> <li>Sidewalks</li> <li>Rachel Carson Trail</li> </ul> |
|--|--|--|

### Phase Key

- Phase 1
- Phase 2
- Phase 3

- 1 POND AQUATICS EDUCATION TRAIL**
- ADA-compliant trail from parking to accessible Hampton Park Pond observation area
  - Nature exploration trails circumnavigate pond and stormwater basin across Pond Drive
  - Another trail connects to Rotary Pavilion and soccer field trail
  - Add 2 ADA-compliant parking spaces on north side of Pond Drive
  - Crosswalk over Pond Drive
  - Dredge existing pond and improve conditions for aquatic life and recreational fishing
  - Interpretive signage at stormwater basin and Hampton Park Pond

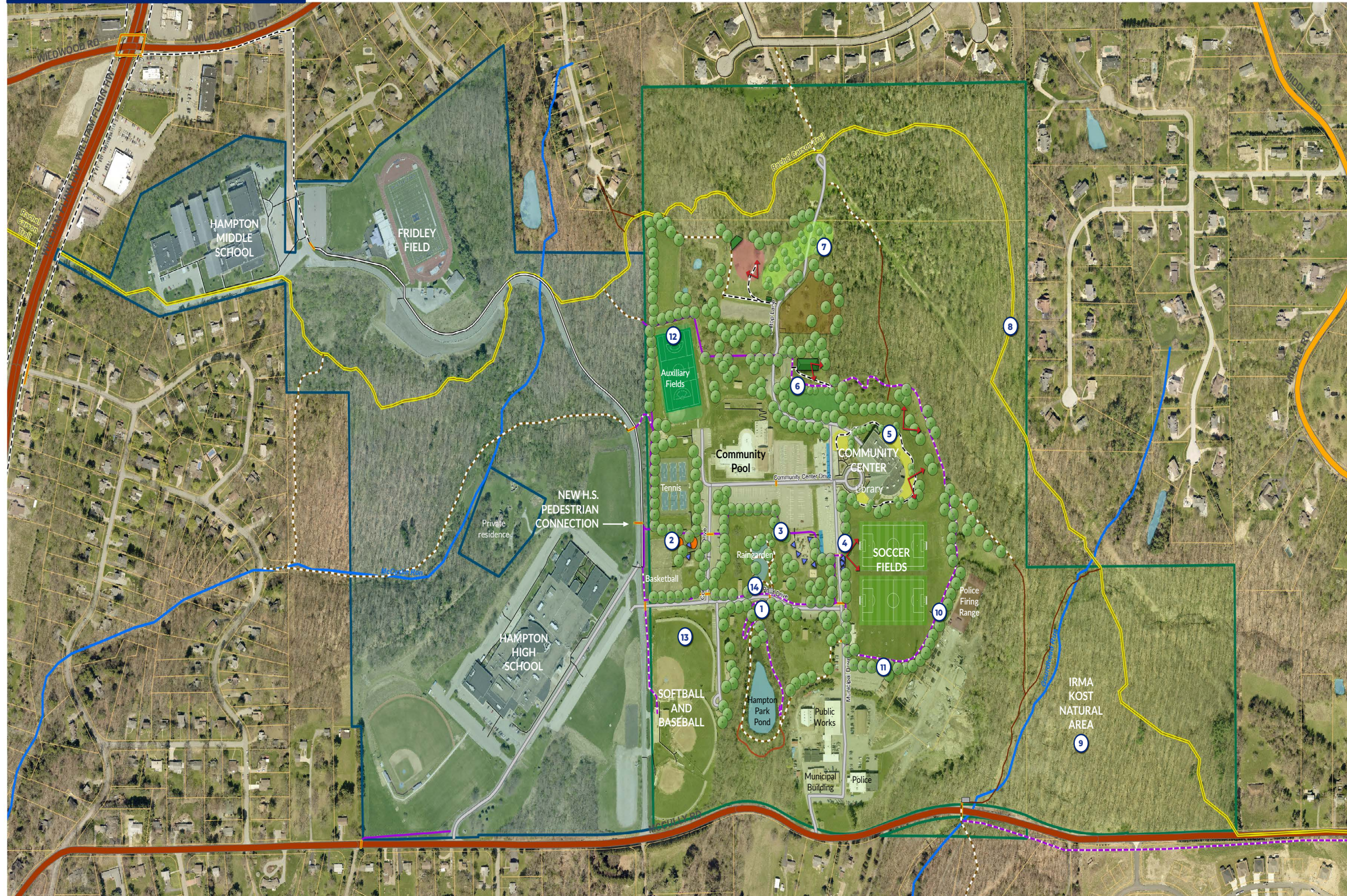
- 2 SPORTS COURT PLAY EQUIPMENT**
- Name the play area for identification
  - Replace play equipment and safety surfacing
  - Add shade structures and trees
  - Add seating and tables
  - Add signage
  - Designate ADA parking spaces close to play area entrance

- 3 CENTRAL PLAY EQUIPMENT**
- Name the play area for identification
  - Improve accessibility
  - Connect play area and swings
  - Add shade structures and trees
  - Add seating and tables
  - Add signage
  - Designate ADA parking spaces close to play area entrance

- 4 SOCCER VIEWING AREA**
- 70'x30' accessible paved area for bring-your-own seating at soccer-field overlook
  - Accessible connections to parking and trails
  - Designate ADA parking spaces in the immediately adjacent lot
  - Provide shade structures

- 5 COMMUNITY CENTER COURTYARDS**
- Create meandering loop sidewalk along outer edge of hillside to encircle Community Center, provide useful outdoor spaces, a 0.25-mile ADA-compliant walking loop, and views of the valley and woods
  - The meanders create spaces for connecting yet individual courtyards that serve as informal or designated event spaces, including for expanded room rentals for the Community Center
  - One courtyard serves as an outdoor space for the library, and could potentially be fenced for child safety
  - Add Adirondack chairs on the lawn to overlook the valley
  - Plants screen the Community Center service entrance and delivery dock at rear of building

- 6 PAVILION AND EVENTS LAWN**
- 40'x80' pavilion, seating about 170, with catering kitchen, restrooms, serving area
  - Could be constructed for 3- or 4-season use
  - Designated ADA parking at adjacent lot and ADA-complaint sidewalk connections to nearby events lawn
  - Nearby events lawn creates additional flexibility for tandem or separate uses
  - Photography spots in close proximity



- 7 UPPER ORCHARD**
- Plant additional fruit and nut trees for general community use to replenish the historic orchard

- 8 RACHEL CARSON TRAIL SEGMENT**
- 1 mile of the 45-mile-long Rachel Carson Trail traverses Hampton Community Park and the Irma Kost Natural Area
  - Township collaboration with the Rachel Carson Trail Conservancy (which has an assigned trail steward for Hampton Township) could assist in improved maintenance of this segment

- 9 IRMA KOST NATURAL AREA**
- Formalize parking area along McCully Road by adding wheel stops, signage and wayfinding
  - Replace the trailhead map
  - Provide additional wayfinding to link to the Community Center area and the Rachel Carson Trail
  - Collaborate with Scouts on maintaining existing or building new trail wayfinding, trail identification, bridges and boardwalks
  - Add interpretive signage

- 10 CONNECTIVITY NETWORK**
- This master plan trail network for the Community Park is consistent with the intentions of the comprehensive plan to provide internal connections with the park and external links
  - It adds a combination of natural-surface and limestone trails in addition to sidewalks with all appropriate access for individuals of all abilities
  - Installation of wayfinding, mileage and trail signs should accompany development of the network

- 11 TREE PLANTINGS**
- This master plan suggests extensive replantings, as the park had been virtually cleared of trees for grading and construction
  - This plan suggests approximately 325 additional trees to create shade, mitigate stormwater runoff, cleanse the air and to define spaces in an attractive and functional way

- 12 MULTI-PURPOSE TURF FIELD**
- This master plan suggests a multi-purpose field
  - Installation of ballfield lights
  - Expansion of parking to assure accessibility
  - Stormwater management facilities

- 13 BASEBALL FIELD NETTING SYSTEM**
- This master plan suggests installation of backstop netting on all three fields
  - Installation of backstop padding

- 14 UPGRADED ACCESSIBLE RESTROOMS**
- This master plan suggests upgraded accessible restrooms
  - CXT 20' x 26' Unit: Heated

► **High-priority strategy**

**6. Conduct monthly playground inspections and annual audits to assure safety and ASTM (American Society for Testing and Materials) compliance.**

- **Responsible Parties:** Department of Community Services , Parks and Recreation Department

► **High-priority strategy**

**7. Continue to invest in infrastructure improvements that enhance the public realm and pedestrian experience (lighting, street furniture, signage, landscaping, sidewalks, accessibility, etc.)**

- Pond Aquatics Educational Trail
- Sports Court Play Equipment (5 - 12 years)
- Central Play Equipment Shade (shade structure)
- ADA Soccer Viewing Area
- Community Center Courtyards
- Three Season Pavilion/Event Lawn Music Patio
- Expand Upper Orchard
- Baseball Netting Structure
- Rachel Carson Trail Extension and Improvements
- Irma Kost Natural Area Trail, Bridge, Parking, Invasive Species Management
- Connectivity Network
- Native Tree Plantings
- Develop a Turf Multi-Purpose Field with field lighting for lacrosse, soccer, and baseball
- Community Pool Upgrade and Accessibility as needed
- Community Center: Capital Projects
- Pool: Capital Projects
- ADA Restrooms (to be constructed in 2023)

- **Responsible Parties:** Department of Community Services, Parks and Recreation Department, Township Manager, Athletic Associations

# Grant Strategies

Applying for a grant is not simply a matter of filling out the proper forms and submitting them. Grants can be very competitive. Often funding agencies receive requests that amount to as much as ten times more than the money available. It is, therefore, very important that you are well prepared in submitting your application. The following outlines several steps that can significantly improve your chances of receiving a grant.

1. Be well prepared.
  - Know the funding agency - contact persons, addresses, and phone numbers.
  - Be sure you are an eligible applicant for the agency and program through which you intend to apply.
  - Investigate each grant opportunity to be sure that what you are applying for meets the funding criteria.
  - Be complete and accurate in your application. Do not assume that you will have an opportunity to correct mistakes, update data, etc.
  - Submit your application several days prior to the deadline; this assures it is in on time and shows that you are well prepared.
2. Have a vision, a plan, and a project that is ready to go.
  - A vision shows the funding agency that you have looked to the future. It shows where your application fits into the bigger picture in your community and/or department. A vision can come from your Comprehensive Recreation, Parks, Open Space and Greenways Plan or be a part of a broader community effort.
  - A plan shows that you have looked at the details of what you want to do. Be more specific in your plan than in your vision.
  - Describe where your matching funds will come from. Show that you can leverage funding from a variety of sources - local taxes, private contributions, other grants, etc.
  - Describe in detail how you will address maintenance of any facilities. Maintenance is a key factor if an agency is to invest large dollars in your project.
  - Show previous successes you have had. Show existing parks that have previously been funded. Indicate how your successes in other projects will impact the project you are applying for.
3. Contact the Funding Agencies.
  - Make a personal contact with the funding agency as early in the process as you can. Keep them informed but don't badger them. Show them your vision and how this specific project fits into it.
    - » DCED - Contact your local State Representative and/or Senator. Also contact your local DCED Office.
    - » DCNR - Contact the Regional Recreation Advisor.
    - » CDBG - Contact the local office of Community Planning and Development.

## Trail easements, programs, model ordinances

The process for acquiring needed easements for trails is flexible and may be based on the Township’s comfort level with opening conversations with property owners. Naturally, the community may wish to consult with its solicitor, as legal advice may be needed.

The nature of an initial conversation about an easement could depend on the location of the property, the importance an easement to the success of a project, and any understanding of the property owner’s point of view about a project. The community may consider it advantageous to approach an owner through official channels or, if a Connectivity Team is created as proposed in the Implementable Plan, this could be their task to take the first step on a neighbor-to-neighbor basis.

Pennsylvania-specific information on easement acquisition, easement agreements, sidewalk design and implementation, and strategic use of the Township’s official map may be found at [conservationtools.org](https://www.conservationtools.org). This site also provides model easement agreement documents, both simple and detailed versions. (The simple version is provided in the appendix.)

## Potential Funding Options

The following is a “go-to” list of potential public funding for projects related to active transportation, including biking, greenspace and trails and walking. Applicability depends on whether the projects are related to mobility, clean air, clean water, healthy living or economic development.

To brainstorm about applicability regarding funding sources, contact the agency representatives listed on page 69, and also consider private foundations.

### DCED Greenways, Trails and Recreation Program (GTRP)

**Purpose:** Funding for planning, acquisition, development, rehabilitation and repair of greenways, recreational trails, open space, parks and beautification projects. Projects can involve development, rehabilitation and improvements to public parks, recreation areas, greenways and trails, as well as river conservation.

**Eligibility:** Municipalities; Councils of Governments; Authorized Organizations; Institutions of Higher Education; Watershed Organizations; For-Profit Businesses

**Deadline:** Applications typically accepted February 1 - May 31 each year.

**Match/Funding:** 15% match of the total project cost; grants do not exceed \$250,000

**Website:** <https://dced.pa.gov/programs/greenways-trails-and-recreation-program-gtrp/>

## SPC & PennDOT Transportation Alternatives Set-Aside Program

**Purpose:** The Transportation Alternatives Set-Aside (TASA) Program provides funding for programs and projects defined as transportation alternatives, including on- and off-road pedestrian and bicycle facilities; infrastructure projects for improving non-driver access to public transportation and enhanced mobility; environmental mitigation; recreational trail program projects; and, safe routes to school projects. Key criterion in the review of applications will be readiness for implementation and delivery, safety, consistency with local or regional plans; collaboration with stakeholders; and, statewide or regional significance.

### Eligibility:

- Local and tribal governments
- Regional transportation authorities
- Transit agencies
- Natural resource or public land agencies, including federal agencies
- School districts, local education agencies, or schools
- A nonprofit entity responsible for the administration of local transportation safety programs
- Any other governmental entity with responsibility for oversight of transportation or recreational trails

**Deadline:** Next application period of PennDOT TA is yet to be determined. Next Application Period of SPC TA Program has yet to be posted, but typically opens in June of each year.

**Local Match Requirement:** There is no match requirement; however, local sponsors pay all costs for pre-construction activities (design, environmental clearance, right of way, utilities, etc.) and PennDOT provides 100% cost reimbursement for the construction phase (including construction inspection).

## DCED Multimodal Transportation Fund (MTF)

**Purpose:** Provides grants to encourage economic development and ensure that a safe and reliable system of transportation is available to Pennsylvania residents. The program is intended to provide financial assistance to improve transportation assets that enhance communities, pedestrian safety, and transit revitalization. The program is under the direction of the Commonwealth Financing Authority.

**Eligibility:** Local Governments; Counties; Councils of Governments; Businesses & Non-Profits; Economic Development Organizations; Public Transportation Agencies (including but not limited to an airport authority, public airport, port authority, or similar public entity); and, Rail and Freight Ports

**Deadline:** Applications are typically accepted between March 1 and July 31.

**Local Match Requirement:** 30% match of requested amount (state/federal grants do not count as match); Grants must be between \$100,000 and \$3,000,000.

**Website:** <http://community.newpa.com/programs/multimodal-transportation-fund/>

## Community Development Block Program

**Purpose:** Provides funds to enable communities to effectively address many of their needs such as infrastructure, housing, and community facilities. It is facilitated through the DCED. It can be used for public services, community facilities, streets and sidewalks, and planning.

**Eligibility:** Annual entitlement funding is given to counties, cities, boroughs and townships in rural and nonmetropolitan areas of the state. Competitive project funding is available to local governments of small municipalities (population under 10,000) for critical infrastructure or revitalization projects.

**Deadline:** Entitlement funding applications are typically due the end of October of each year and competitive applications are typically due at the end of January. Certain requirements must be met in advance of application submissions.

**Local Match Requirement:** Entitlement funding is set by Act 179 formula. Competitive funding has a minimum request of \$100,000 and no ceiling limit.

**Website:** <https://dced.pa.gov/programs/community-development-block-grant-cdbg/>

## DCNR Funding

**Purpose:** DCNR's Bureau of Recreation and Conservation provides a single point of contact for communities and non-profit conservation agencies seeking state assistance in support of local recreation and conservation initiatives and those that implement Pennsylvania's Comprehensive Outdoor Recreation Plan. This assistance can take the form of grants, technical assistance, information exchange, and training. All of DCNR's funding sources are combined into one annual application cycle and there is a single application format and process with one set of requirements and guidelines.

**Eligibility:** A wide range of grant and technical assistance programs are offered through the DCNR to help communities, land conservancies, and non-profit organizations plan, acquire, and develop:

- Recreation, park and conservation facilities
- Watersheds and rivers corridors
- Greenways and trails
- Heritage areas and facilities
- Critical habitat, natural areas & open space
- Tree Vitalize

**Deadline:** Applications are typically accepted in the spring and the fall. Applicants can apply for both rounds, but not for the same project.

**Local Match Requirement:** Generally, a 50% match by either cash or non-cash value is required

**Website:** <https://www.dcnr.pa.gov/Communities/Grants/Pages/default.aspx>

## PennDOT Multimodal Transportation Fund

**Purpose:** Provides grants to ensure that a safe and reliable system of transportation is available to the residents of this commonwealth. The program is intended to provide financial assistance to municipalities, councils of governments, businesses, economic development organizations, public transportation agencies, rail freight, passenger rail, and ports in order to improve transportation assets that enhance communities, pedestrian safety, and transit revitalization.

**Eligibility:** Municipalities; Council of Governments; Business/Non-profit; Economic Development Organization; Public Transportation Agency; Ports or Rail / Freight Entity

**Deadline:** The application period is typically in the fall of each year around October and November.

**Local Match Requirement:** 30% match of the amount awarded; grants normally do not exceed \$3,000,000

**Website:** <https://www.penndot.gov/ProjectAndPrograms/MultimodalProgram/Pages/default.aspx>

## PA WalkWorks

**Purpose:** WalkWorks helps with funding to assist municipal entities with the development of active transportation plans and related policies. WalkWorks continues its aim to establish new or improved pedestrian, bicycle and transit transportation systems – activity-friendly routes – that are combined with land use and environmental design, thereby increasing connectivity to everyday destinations.

**Eligibility:** Municipalities and Planning Organizations

**Deadline:** Applications have been available on a rolling basis, with new application windows opening periodically. The best way to track this is to sign up for email bulletins via the website below.

**Local Match Requirement:** No matching funds are required for eligibility.

**Website:** <https://www.health.pa.gov/topics/programs/WalkWorks/Pages/WalkWorks.aspx>

## Redevelopment Assistance Capital Program (PA Office of Budget)

**Purpose:** The Redevelopment Assistance Capital Program (RACP) is a Commonwealth grant program administered by the Office of the Budget for the acquisition and construction of regional economic, cultural, civic, recreational, and historical improvement projects. RACP projects are authorized in the Redevelopment Assistance section of a Capital Budget Itemization Act, have a regional or multi-jurisdictional impact, and generate substantial increases or maintain current levels of employment, tax revenues, or other measures of economic activity.

**Eligibility:** Communities with state-funded projects that cannot obtain primary funding under other state programs and have a total cost of \$1 million

**Deadline:** Applications can be submitted electronically at any time during the year

**Local Match Requirement:** At least 50% of the cost must be matched and secured at the time of the formal application

**Website:** <https://www.budget.pa.gov/Programs/RACP/Pages/Main%20Page.aspx>

## Reconnecting Communities Pilot Program (US DOT)

**Purpose:** This discretionary grant program is the first-ever program to help reconnect communities that were previously cut off from economic opportunities by transportation infrastructure. Funding supports planning grants and capital construction grants, as well as technical assistance, to restore community connectivity through the removal, retrofit, mitigation, or replacement of eligible transportation infrastructure facilities.

**Eligibility:** States, units of local government, federally recognized Tribal governments, metropolitan planning organizations, non profit organizations

**Deadline:** The first round of applications was accepted in the fall of 2022. Since this is a pilot program, keeping abreast of a new round of applications via the website.

**Local Match Requirement:** 20% match of requested amount although depending on the size of the project and other available funding for the project, an amount greater than 20% may be necessary

**Website:** <https://www.transportation.gov/grants/reconnecting-communities>

## Rec-TAP Grant (Pennsylvania Recreation Park Society)

**Purpose:** The Recreation and Parks Technical Assistance Program (RecTAP), is a statewide technical assistance service designed to help organizations receive expert advice on maintenance, recreation, park and trail issues. RecTAP matches recreation, park and trail professionals with Pennsylvania municipalities and non-profits to provide advice and assistance on specific issues that can be addressed within a limited amount of time. The maximum grant is \$2,500.

**Eligibility:** Municipalities and non-profits for parks and recreational needs

**Deadline:** Applications can be submitted at any time during the year but an entity can received only one grant per year

**Local Match Requirement:** Organizations with a PRPS group membership or with a staff member who has a PRPS membership are not required to pay a match. Non-member organizations are required to pay a \$100 match

**Website:** [https://prps.org/Public/Public/Publications\\_Resources/PRPS\\_Grants.aspx](https://prps.org/Public/Public/Publications_Resources/PRPS_Grants.aspx)

**Note:** The PRPS also has a Get Outdoor PA Mini-Grant program which provides reimbursement grants of \$1,500-\$3,000 to help fund equipment and training related to outdoor programming. A 50% cash match is required and applicants must be a Get Outdoors PA Community Partner.

## Other Funding Strategies

It is important to consider multiple funding sources for most major projects. Identify the possible groups, organizations, or grants agencies that may have an interest in a specific project. Consider the following potential sources of funding:

### 1. Grants Agencies

- It is wise to consider more than one grant source for multi-faceted projects. Different agencies may be willing to provide funding for different portions of your project. For example, if a project includes construction of trails and development of a neighborhood park, there are agencies that will fund trails and others who will fund parks. Applying to both types of agencies for funding that meets their specific criteria enhances the likelihood of receiving a grant.
  - » Surrounding Municipalities - In some cases, surrounding municipalities have a specific interest in park facilities located within the Township. In these cases, there may be interest in making a financial contribution toward the project.
  - » Local Organizations - Often, local recreation organizations are willing to raise funds to be used for upgrades to their facilities. These funds should be considered as part of the local match for grant funding. For example, if a soccer organization is already investing annually to upgrade facilities, they may be willing to utilize several years' worth of that investment toward a major renovation of the soccer facility. This could provide funds to be used as matching funds for a grant.
  - » Funds Already Planned for Use - It is also helpful to consider funds that may already be allocated for use in or near a park that may be used as a source of matching funds. For instance, if a water or sewer line is being planned to run through a park, tapping into that line could make the money spent for its installation an eligible match for a park project. The same could be true of parking areas, roads, trails, trailheads, and other projects.
  - » **Creativity** - Creativity is key to finding and leveraging funding sources with one another. The intent is to reduce the local share as low as possible while accomplishing the goals of the project. Consider as many options as you can identify. Then contact the funding agencies to determine whether your plan meets their requirements.

This list provides contact information for people involved in community projects or transportation planning. Though it is not an exhaustive list, it is a starting point for most trail or connectivity projects the Township will undertake.

Township of Hampton Connectivity Partners				
First	Last	Affiliation	Title	Email
Andy	Baechle	Allegheny County Parks	Director	<a href="mailto:abaechle@county.allegheny.pa.us">abaechle@county.allegheny.pa.us</a>
Eric	Boerer	BikePGH	Advocacy Director	<a href="mailto:eric@bikepgh.org">eric@bikepgh.org</a>
Leann	Chaney	SPC Active Transportation	Planner	<a href="mailto:lchaney@spcregion.org">lchaney@spcregion.org</a>
Chris	Chirdon	Walk-Bike Shaler	Planning Commission Member	<a href="mailto:chirdon@pitt.edu">chirdon@pitt.edu</a>
Darla	Cravotta	Allegheny County Executive's Office	Dir. Community Relations	<a href="mailto:Darla.Cravotta@alleghenycounty.us">Darla.Cravotta@alleghenycounty.us</a>
Rebecca	Cunningham	Hampton Township School District	Asst. Superintendent	<a href="mailto:cunningham@ht-sd.org">cunningham@ht-sd.org</a>
Hal	English	Rotary Club	President	<a href="mailto:henglish@nb.net">henglish@nb.net</a>
Kathy	Frankel	DCNR SW Region	Recreation & Conservation Mgr.	<a href="mailto:kfrankel@pa.gov">kfrankel@pa.gov</a>
Melissa	Girty	Pittsburgh Regional Transit	Government Affairs Liaison	<a href="mailto:mgirty@portauthority.org">mgirty@portauthority.org</a>
Kimberly	Kaufmann	Rep. Rob Mercuri's Office	District Office Manager	<a href="mailto:kkaufmann@pahousegop.com">kkaufmann@pahousegop.com</a>
Ruth	McClelland	PennDOT District 11	Bike Ped & Safety Manager	<a href="mailto:rumcclella@pa.gov">rumcclella@pa.gov</a>
Adam	Mattis	DCNR SW Region	Regional Advisor	<a href="mailto:amattis@pa.gov">amattis@pa.gov</a>
Ann	Ogoreuc	Allegheny County Economic Devel.	Asst. Dir., Mobility & Transp.	<a href="mailto:Ann.Ogoreuc@alleghenycounty.us">Ann.Ogoreuc@alleghenycounty.us</a>
Stephanie	Spang	PennDOT Connects	District 11 Liaison	<a href="mailto:cspang@pa.gov">cspang@pa.gov</a>
Josh	Spano	SPC - Transportation Planning	Manager, Transp. & Safety	<a href="mailto:jspano@spcregion.org">jspano@spcregion.org</a>
John	Stephen	Rachel Carson/Harmony Trail	Trail Development Coordinator	<a href="mailto:john.stephen@rachelcarsontrails.org">john.stephen@rachelcarsontrails.org</a>
Arvind	Venkat	PA House of Representatives	House Member, 30th District	<a href="mailto:RepVenkat@pahouse.net">RepVenkat@pahouse.net</a>
Megan	Winters	Sen. Lindsay Williams's Office	Chief of Staff	<a href="mailto:megan.winters@pasenate.com">megan.winters@pasenate.com</a>

Hampton Township Park Improvements				
Opinion of Probable Construction Costs Estimate - DRAFT 2023				
<b>Site Preparation</b>				
Item	Quantity	Unit	Unit Price	Extension
Removals and demolition	1	EA	\$20,000	\$20,000
<b>Subtotal</b>				<b>\$20,000</b>
<b>Way Finding &amp; Signage</b>				
Item	Quantity	Unit	Unit Price	Extension
Park Identification Sign	1	EA	\$800	\$800
Street Name Sign	6	EA	\$250	\$1,500
Facility Sign	12	EA	\$250	\$3,000
Large Directional Sign	2	EA	\$2,000	\$4,000
Medium Directional Sign	5	EA	\$1,200	\$6,000
Trail Kiosk	2	EA	\$4,500	\$9,000
Trail Directional Sign	10	EA	\$200	\$2,000
Trail Marker	15	EA	\$150	\$2,250
Hazard or Boundary Sign	4	EA	\$150	\$600
Shelter Name Sign	8	EA	\$250	\$2,000
Storybook Walk Signage	12	EA	\$300	\$3,600
Interpretive Sign	6	EA	\$4,500	\$27,000
Native Entrance Planting	1	EA	\$2,500	\$2,500
<b>Subtotal</b>				<b>\$64,250</b>
<b>Sports Court Play Area</b>				
Item	Quantity	Unit	Unit Price	Extension
* Sports Court Inclusive Play Equipment (2-5 Years )& PIP Safe Surfacing	1	LS	\$300,000	\$300,000
Sports Court Inclusive Play Equipment Shade Structures	3	EA	\$5,000	\$15,000
<b>Subtotal</b>				<b>\$315,000</b>
<b>Pavilion and Events Lawn</b>				
Item	Quantity	Unit	Unit Price	Extension
3 Season Pavilion (40 x80) Capacity 150 w/ Kitchenette & Restroom	1	EA	\$400,000	\$400,000
Entertainment Corridor (Music) - 10' x 10' with roof	100	SY	\$75	\$7,500
Electrical Upgrade	1	EA	\$20,000	\$20,000
ADA Benches	3	EA	\$1,800	\$5,400
Bike Rack	1	EA	\$800	\$800
Picnic Tables including one with accessibility	16	EA	\$2,600	\$41,600
Parking Improvements including ADA Parking and Access	2	LS	\$10,000	\$20,000
Native Trees	25	EA	\$500	\$12,500
* Accessible Play Equipment	1	EA	\$100,000	\$100,000
<b>Subtotal</b>				<b>\$607,800</b>
<b>Central Playground Area</b>				
Item	Quantity	Unit	Unit Price	Extension
Central Play Equipment Shade Structures	1	EA	\$20,000	\$20,000
Central Play Equipment Shade Trees	15	LS	\$500	\$7,500
Accessible Path from Play Structure to Swings	35	FT	\$75	\$2,625
<b>Subtotal</b>				<b>\$30,125</b>

\* price includes 35% of purchase price for installation and \$10,000 for freight

Pond Aquatics Education Trail				
Item	Quantity	Unit	Unit Price	Extension
Pond Dredging and Disposal of Material	1	EA	\$300,000	\$300,000
Erosion & Sedimentation Controls	1	AC	\$25,000	\$25,000
Perimeter Discovery Trail (Trail Surface Aggregate)	1,500	FT	\$75	\$112,500
Replacement of Overflow Pipe	1	EA	\$3,000	\$3,000
Replacement of Intake Pipe	594	FT	\$75	\$44,583
Removal of Invasives	1	EA	\$2,000	\$2,000
Environmental Education and Observation Platform	1	EA	\$30,000	\$30,000
Habitat Improvements: Native Plantings, Bird Boxes	1	EA	\$10,000	\$10,000
ADA Benches	4	EA	\$1,800	\$7,200
Native Trees	25	EA	\$500	\$12,500
Crushed Limestone Trail & Accessibility from ADA Parking	150	FT	\$75	\$11,250
Removable Bollards at Entrances	2	EA	\$2,600	\$5,200
<b>Subtotal</b>				<b>\$563,233</b>
Sports Fields				
Item	Quantity	Unit	Unit Price	Extension
Baseball Field Netting				
Barrier Netting System for Baseball Fields #1, #2, #3	3	EA	\$66,660	\$199,980
Multi-Purpose Turf Site Preparation and Removals				
Erosion Control	1	ALLOW	\$30,000	\$30,000
Miscellaneous removals	1	LS	\$2,500	\$2,500
Strip topsoil (assumes 6")	2,150	CY	\$11	\$23,650
Stockpile topsoil onsite for reuse (w/temp stabilization)	2,100	CY	\$5	\$10,500
Earthwork (minimal cut/fill assumes balance)	1	ALLOW	\$20,000	\$20,000
Repair erosion areas on ex slopes	4	EA	\$7,500	\$30,000
Multi-Purpose Improvements Turf Field				
Concrete curb edger	1,360	LF	\$42	\$57,120
Pressure treated 2"x4" turf nailer	1,360	LF	\$8	\$10,880
Synthetic turf field w/markings (includes baseball infield)	113,175	SF	5.25	\$594,169
Flat panel and collector drains	1	ALLOW	\$50,000	\$50,000
Geotextile fabric	12,575	SY	\$2.75	\$34,581
8" 2-layer turf drainage base	12,575	SY	\$20	\$251,500
Perimeter fencing (chain link, black elefin-coated, 6'-o ht with safety cap)	1,375	LF	\$55	\$75,625
Miscellaneous field accessories: signage, etc. (each field)	2	EA	\$15,000	\$30,000
Scoreboards (one per each field)	2	EA	\$40,000	\$80,000
Field Lights: LED/Total Light Control	1	Ls	\$375,000	\$375,000
New Dugouts	2	EA	\$70,000	\$140,000
Bleachers with Shade Structures	4	EA	\$34,000	\$136,000
Concrete walk (6'-o wide) from ADA parking to both fields and dugouts	700	SY	\$90	\$63,000
Wildflowers on slope (interplant potted perennials into ex grass) 20,000 sf	1	LF	\$20,000	\$20,000
Native Shade Trees	7	EA	\$650	\$4,550
<b>Subtotal</b>				<b>\$2,238,875</b>

Existing Soccer Field Amenities				
Item	Quantity	Unit	Unit Price	Extension
Stormwater Mitigation Off Hillside near existing Soccer Fields	1	EA	\$20,000	\$20,000
Bleachers with Shade Structures: Soccer Fields	2	EA	\$34,000	\$68,000
4 Row by 15' Long Bleacher	2	EA	\$4,200	\$8,400
Updated Play Equipment near Auxiliary Field with Shade	1	EA	\$50,000	\$50,000
Concrete Pad 15' x 25'	375	SY	\$90	\$33,750
Native Shade Tree Plantings	200	EA	\$500	\$100,000
Upper Orchard Plantings				
Fruit and Nut Trees	75	EA	\$500	\$37,500
Proposed Trail Development and Parking				
Crushed Limestone Trail	500	FT	\$50	\$25,000
Formalize Irma Kost Parking	1	EA	\$5,000	\$5,000
Sidewalk around Community Center	850	SY	\$90	\$76,500
Native Tree Plantings	100	EA	\$500	\$50,000
<b>Subtotal</b>				<b>\$474,150</b>
<b>TOTAL</b>				<b>\$4,313,433</b>
DESIGN, PERMITTING, ENGINEERING				\$647,015
Contingency (20%)				\$862,687
<b>GRAND TOTAL</b>				<b>\$5,823,135</b>
<b>Budget</b>				<b>\$5,900,000</b>

**IMPLEMENTATION STRATEGIES**

The successful implementation of Hampton’s Comprehensive Recreation, Parks, and Open Space Plan will depend on a variety of factors, including but not limited to, the following:

- **Public Support and Education** - Township residents’ support of future efforts to develop recreation opportunities and preserve open space is critical to the future of a successful system. Immediately following the approval of this planning document, efforts should be made to publicize its findings and recommendations.
- **Involvement of Elected Officials** - As the primary decision-makers of the Township, elected officials should be updated on a regular basis regarding the recommendations of this plan, the status of implementation, public support, and related issues as they arise.
- **Financial Support** - The Township continues to show a commitment to a quality recreation and open space system. Commitment to funding recreation, open space and greenways projects will greatly influence the success with which the recommendations of this plan are implemented. Alternative funding sources should be continually explored to supplement the contributions of local governments and local organizations.
- **Volunteer and Partnership Efforts** - A strong volunteer base, including partnerships with organizations such as the Environmental Advisory Committee, Hampton Athletic Associations, the Hampton School District and others, can make a large impact on implementation of the plan’s recommendations.

